



Agenda
Linn-Benton Technical Advisory Committee Meeting
Remote Only

Date: Tuesday, August 4, 2020
Time: 2:30 – 4:00 pm
Phone: 1-669-900-6833
Zoom: <https://us02web.zoom.us/j/82857157709>
Meeting ID: 828 5715 7709
Password: 273258
Contact: Nick Meltzer, Transportation Programs Manager, (541) 758-1911

- | | | | |
|----|------|--|------------------------------|
| 1) | 2:30 | Call to Order and Roll Call
Staff updates (Meltzer) | Vice Chair, Tim Bates |
| 2) | 2:35 | Agenda Review | Bates |
| 3) | 2:40 | Public Comment | Bates |
| 4) | 2:50 | Re-affirmation/Election of Chair
With Dana Nichols no longer employed at OCWCOG, a decision on appointing the new AAMPO staff person vs re-electing a chair is needed.

<i>Action Requested: Decision on Chair</i> | All |
| 5) | 3:00 | Minutes of May 5, 2020 (Attachment A)

<i>Action Requested: Approval of Minutes</i> | Chair |
| 6) | 3:05 | Loop Board Membership and Bylaws Update
Informational update from Loop Board discussion | Staff |
| 7) | 3:15 | COVID-19 Future Planning Update
Discussion on fall enrollment and subsequent Loop service needs. | All |
| 8) | 3:45 | STIF Project Discussion
A check in on existing STIF projects. In addition, with an upcoming opportunity for STIF discretionary grants, staff is requesting input on whether there are long term opportunities for the Loop and Albany-Corvallis region.

<i>Action Requested: Discussion</i> | Staff |

The meeting location is accessible to persons with disabilities. Sign language, interpreter services or other accommodations can also be provided by contacting Emma Chavez at least 48 hours prior to the meeting. Emma can be reached at 541-967-8551 (TTY/TTD 711) or echavez@ocwcog.org.

9) 4:15 Budget and Ridership Reports (Attachment B1 & B2)

Barry Hoffmann

10) 4:30 Adjournment

Chair



LINN-BENTON LOOP TECHNICAL ADVISORY COMMITTEE**Tuesday, May 5, 2020****2:30 – 4:30**

Zoom Remote Meeting

DRAFT MEETING MINUTES

Board Members: Barry Hoffmann, Tim Bates, Mark Volmert, Brad Dillingham, Andrew Koll, Dana Nichols, Nick Meltzer, Ken Bronson, Mark Bernard, and Sarah Bronstein

Guests: Lisa Scherf, Meredith Williams, and Chris Bailey

Staff: Stephen Dobrinich, C. Clark, and Emma Chavez

TOPIC	DISCUSSION	DECISION / CONCLUSION
1. Call to Order and Introductions	Nick Meltzer advised that Stephen Dobrinich is a new CAMPO Planner and will be transitioning as CAMPO representative to the Loop TAC and Cascades West Area Commission on Transportation (CWACT) TAC.	Meeting called to order at 2:32 pm by Chair Dana Nichols.
2. Agenda Review		ADDITIONAL AGENDA ITEM: Request from Mark Volmert for the TAC to discuss posing a question to the Board about their membership
3. Public Comments		There were no public comments.
4. Minutes of February 4, 2020	Tim Bates moved to approve the February 4, 2020 meeting minutes. Mark Volmert seconded. Consensus to approve the meeting minutes as presented.	Consensus to approve the February 4, 2020 meeting minutes as presented.
5. Loop Board Bylaws Update	Nick Meltzer advised that the Loop Board requested for the Board Bylaws to reflect the At-Large member position and to update the budget content in regards to the timeline. Mark Volmert noted that there is no reference on the bylaws as to who the “agency” is. It was clarified that the City of Albany should be noted as the “operator” and not “agency”.	Consensus by the TAC to recommend the following changes to the Board in regards to the Board Bylaws:

	<p>Volmert also questioned if the Board asked for the TAC to have a role on the budget. He noted that in the past, the Loop TAC and Board have reviewed the budget and made a recommendation to the Board. Nichols stated that that would be a Board decision. Volmert stated that the TAC has always reviewed the budget as a technical review consideration. Volmert would like the Board to consider whether this needs to be included in the Board Bylaws.</p> <p>Bailey noted that the section of the bylaws being discussed is in regards to the responsibilities of the Board, and the request may be more appropriate to make this change to the TAC bylaws. To this, Volmert advised that the TAC bylaws indicated they will make a recommendation to the Board. He went on to note that there has been confusion as to what the process is, and if there is confusion; language should be added to make the process more clear (e.g. after review of the TAC, the Board shall"). Bailey stated that the confusion that was heard this year was to whether the bylaws implied that the Board had authority over the budget, which they do not. The budget is a decision of the Albany city council, and the process is a way to allow everyone to provide input while keeping things clear bureaucratically.</p> <p>Tim Bates shared that he liked the idea of the TAC reviewing the budget.</p> <p>Meltzer noted that for procedural purposes; staff would like a decision on the changes requested by the Board. If additional changes are requested by the TAC, he would like to keep them separate and take them to the Board as an additional recommendation from the TAC.</p> <p>Tim Bates moved to recommend the following changes to the Board; change "agency" to "operator" and adding language to the budget of "after review by the TAC".</p> <p><u>Section 7 of Loop Board Bylaws</u> – Meltzer advised that clarification needs to be made as to whether the Board appoints the TAC members, or if each entity appoints their representative.</p>	<ul style="list-style-type: none"> • Add At-large member position to the Board Bylaws • Add language on budget and timeline • Insert the language from Section 4: Membership from the TAC bylaws into Section 8 of the Board bylaws. Chris Bailey seconded the motion. • Reference the City of Albany as the "operator" and not "agency".
--	--	--

	<p>Volmert stated that there is a discrepancy between the bylaws presented and those posted online. Furthermore, he noted that the original bylaws to his knowledge, indicate that the TAC members are appointed by their member jurisdictions, and the At-large members are appointed by the Board. Volmert would like this clarified on the Board bylaws. Volmert suggested that the language that is on the TAC bylaws in regards to member appointments, be duplicated on the Board bylaws as it is consistent with procedures.</p> <p>Mark Volmert made a motion to insert the language from Section 4: Membership from the TAC bylaws into Section 8 of the Board bylaws. Chris Bailey seconded the motion. Motion carried by consensus.</p>	
<p>ADDITIONAL AGENDA ITEM: REQUEST FROM MARK VOLMERT FOR THE TAC TO DISCUSS POSING A MEMBERSHIP QUESTION TO THE BOARD</p>	<p>Volmert noted that the staff from CAMPO and AAMPO drafted the Board Bylaws with no comment from anyone else. He stated that initially, instead of only having four members in the IGA; it was going to include every member of both MPOs, ODOT, LBCC, and OSU. The Board rejected that and said it would only be four members. However, OSU declined. Volmert stated that he and Lee Lazaro have had many conversations in regards to the Board membership, and that it would be useful to have a representative from Linn County and Benton County. He stated that the reason for this is that the Loop serves, by connection, people outside of the MPO boundaries. He went on to note that the counties are the largest funding contributors to the Loop which is different than it was approximately three years ago. Volmert would like the TAC to pose the following question to the Board; would the Board like to invite OSU, Linn County, and Benton County to serve as a member.</p> <p>Hoffmann questioned Linn County Commissioner Roger Nyquist and Benton County Commissioner Pat Malone and that what may not be represented is AAMPO and CAMPO. Volmert stated that they are both representing the MPOs, not the counties. Volmert clarified that he suggests six members; AAMPO, CAMPO, LBCC, OSU, Linn County, and Benton County.</p>	<p>Members met consensus for staff to add Loop Board Membership to the next Board agenda and include a staff report on the Loop Bylaws and membership</p>

	<p>Bailey stated that it would be helpful to look back at minutes and review the conversations at the Policy Board in regards to membership. She noted that she would not like to frustrate the Board members over something that has already been discussed into extent.</p> <p>Volmert made a recommendation for staff to prepare a report to the Loop Board in reference to the bylaws and membership. Bailey stated that she doesn't disagree that a written report is a good idea. However, she does not feel the need to make a recommendation for staff to provide a written report. Meltzer advised that he felt comfortable explaining the discussion to Board members but is willing to put a memo together if TAC members felt more comfortable with that approach. Volmert stated that he would be happy with that approach.</p>	
<p>6. COVID-19 Response and Future Planning</p>	<p>Nichols noted that due to COVID-19 there have been a lot of changes that had to happen and possible future planning that may need to occur. She asked Hoffmann and Bailey to provide details on the effect COVID 19 has had on the Loop service.</p> <p>Hoffmann provided details of the COVID-19 impacts to the Loop service:</p> <ul style="list-style-type: none"> • Extreme drop in ridership • Riders are going to essential services • Cancelled Express Bus and Campus Connector • Morning and evening loop both running • Fareless service for people to enter from the back and not expose drivers • Do not expect an increase in ridership until schools reopen • Seeing less fuel, maintenance, and salary costs • Ridership may not increase until students return to school • LBCC reported via email that the school expects enrollment to stay the same or go up and the school plans to continue their contribution to the Loop • OSU reports enrollment staying steady and are planning for students to be on campus in the Fall <p>Hoffmann reported that the plan is ramp back up to normal service by Fall time when students return to school, unless there is another</p>	

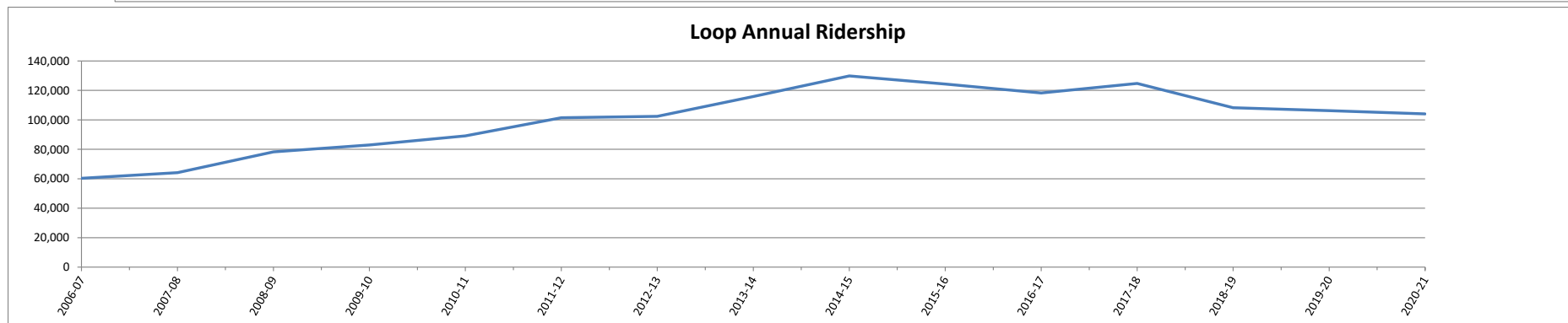
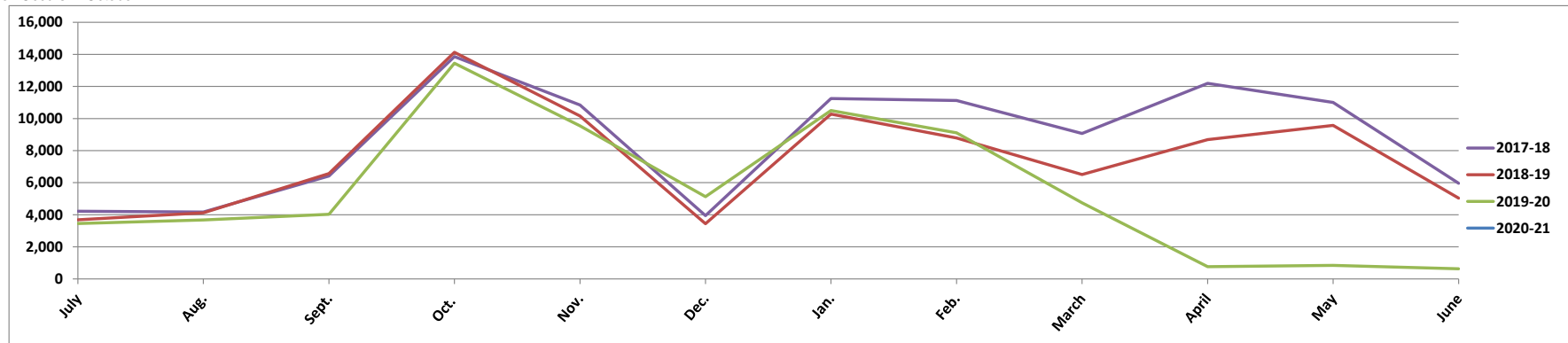
	<p>directive. He went on to note that at the next council meeting will include a resolution to purchase additional buses for expansion.</p> <p>Bailey noted that other discussions have included social distancing once reopened, and possible rider restrictions. She noted that discussions on policies of ridership will continue. Loop transit staff will continue to provide updates.</p>	
7. Marketing Update from LBCC and OSU	<p>Sarah Bronstein from OSU advised that the school typically does a big marketing push over the summer for incoming, transfer, and first-year students. This will look different this year with START orientation sessions will be entirely remote. They are aiming to provide a good reflection of what transit services will look like in the Fall. Bronstein requested the updated ATS and Loop service schedule for this work. She also noted that OSU has design services available and the offer for both schools to collaborate in that regard is still open.</p>	
8. Budget and Ridership Reports	<p>Hoffman reported that the plan is to move forward with the current budget biennial budget for next year. He noted that he reported on ridership already and how the year ends is unknown.</p> <p>Members held a discussion on ridership and the fact that those who continue to ride are going to essential services and it is important to continue transportation for the people that need it.</p>	
9. Other Business		Members met consensus to move the Loop TAC meeting up as needed.
10. Adjournment		4:21 pm

LINN-BENTON LOOP
WEEKDAY RIDERSHIP
REGULAR LOOP PLUS LOOP EXPRESS

MONTH	2002-03	2003-04	2004-05	2005-06	2006-07	2007-08	2008-09	2009-10	2010-11	2011-12	2012-13	2013-14	2014-15	2015-16	2016-17	2017-18	2018-19	2019-20	2020-21	+/-	Ratio
July	2,794	3,260	3,237	3,319	3,692	3,975	6,391	4,709	4,781	5,911	6,036	6,045	6,106	5,512	3,606	4,223	3,690	3,450		-240	-7.0%
Aug.	2,859	2,249	3,143	3,663	3,912	4,140	5,245	3,599	4,261	6,502	5,977	5,331	4,798	4,562	3,430	4,174	4,122	3,680		-442	-12.0%
Sept.	2,425	2,812	3,526	4,240	4,920	4,992	5,614	5,125	6,442	8,303	7,293	4,621	6,751	5,228	6,314	6,418	6,570	4,034		-2,536	-62.9%
Oct.	6,973	8,460	7,934	10,139	11,093	11,539	14,446	13,013	13,527	16,046	16,490	16,516	18,648	15,384	13,712	13,861	14,128	13,447		-681	-5.1%
Nov.	4,800	5,342	6,705	8,422	8,681	8,640	9,643	10,056	11,917	13,440	12,245	12,095	11,667	11,153	11,557	10,843	10,156	9,539		-617	-6.5%
Dec.	3,178	3,412	3,145	3,717	3,338	3,310	5,646	5,393	5,625	5,598	4,600	6,418	7,496	5,860	4,163	3,946	3,442	5,129		1,687	32.9%
Jan.	6,021	5,895	6,530	7,684	8,204	9,075	10,557	11,888	12,667	12,462	14,039	13,599	13,391	11,979	10,439	11,241	10,276	10,500		224	2.1%
Feb.	6,666	6,175	5,868	7,990	8,299	9,152	9,589	10,608	11,415	13,078	13,188	10,736	12,417	10,205	11,126	11,122	8,787	9,113		326	3.6%
March	4,736	5,714	5,907	6,801	7,096	7,232	7,830	9,314	10,529	10,733	9,846	9,521	10,281	10,350	9,270	9,072	6,510	4,743		-1,767	-37.3%
April	6,766	6,836	7,172	7,886	8,952	10,437	11,054	11,963	13,566	14,659	14,149	13,926	13,892	11,548	11,365	12,197	8,687	762		-7,925	-104.0%
May	5,902	6,206	6,764	8,885	9,237	9,753	9,219	10,487	13,261	14,507	13,320	12,161	11,885	10,555	11,700	11,001	9,570	845		-8,725	0.0%
June	3,937	3,955	4,185	5,474	5,575	6,927	6,201	6,225	7,922	8,604	7,202	7,311	7,461	5,883	9,616	5,961	5,039	632		-4,407	0.0%
Sub Total*	57,057	60,316	64,116	78,220	82,999	89,172	101,435	102,380	115,913	129,843	124,385	118,280	124,793	108,219	106,298	104,059	90,977	65,874	0	-25,103	-38.1%
Saturday	0	0	0	0	1,938	2,643	2,931	3,325	3,804	4,459	4,108	3,977	3,923	3,376	3,629	3,871	3,894	3,078		-816	477.2%
Grand Total	57,057	60,316	64,116	78,220	84,937	91,815	104,366	105,705	119,717	134,302	128,493	122,257	128,716	111,595	109,927	107,930	94,871	68,952	0	-25,919	366.0%

Loop plus loop express

*Reg Loop and Express Loop
**Try Transit Week Occurs in October



LINN-BENTON LOOP

LBCC PASS PROGRAM

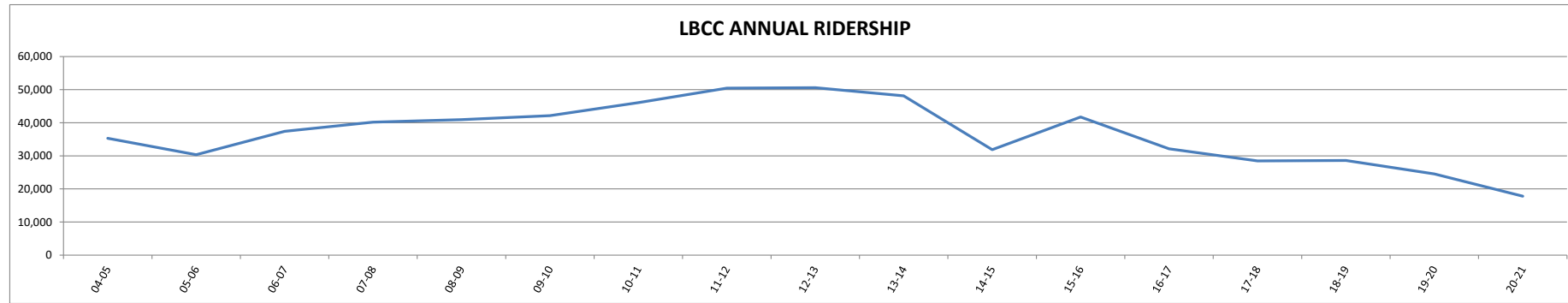
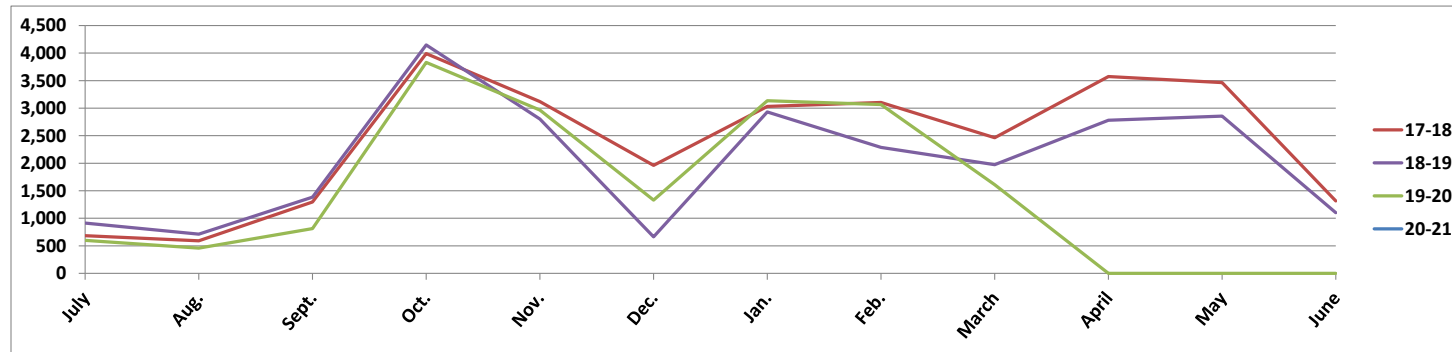
MONTH	02-03	03-04	04-05	05-06	06-07	07-08	08-09	09-10	10-11	11-12	12-13	13-14	14-15	15-16	16-17	17-18	18-19	19-20	20-21	+/-	Ratio	
July	792	1,124	1,056	856	818	1,166	1,587	1,134	1,384	1,419	1,309	1,262	1,262	821	619	684	912	599		-313	-52.3%	
Aug.	737	422	706	731	732	981	1,146	573	791	1,322	1,158	940	911	1,008	577	591	713	458		-255	-55.7%	
Sept.	454	777	960	1,774	1,741	1,668	1,259	1,489	2,087	2,279	2,169	737	1,588	1,133	1,542	1,297	1,384	813		-571	-70.2%	
Oct.	4,155	6,251	4,411	5,373	6,314	6,374	7,050	6,695	6,574	7,500	7,074	4,947	7,217	5,789	3,950	3,991	4,148	3,831		-317	-8.3%	
Nov.	2,921	3,396	3,564	4,598	4,892	4,544	4,692	5,376	5,655	6,169	5,599	3,719	5,092	2,945	3,356	3,120	2,803	2,966		163	5.5%	
Dec.	1,326	1,706	1,071	1,175	1,151	773	2,135	1,873	1,746	1,521	1,114	1,489	2,547	1,297	1,076	1,962	663	1,329		666	50.1%	
Jan.	3,500	4,046	3,538	3,810	4,365	4,500	4,949	5,795	6,187	5,098	5,913	3,936	5,381	4,276	2,883	3,030	2,931	3,134		203	6.5%	
Feb.	3,290	4,190	3,366	4,342	4,719	4,582	4,467	5,150	5,143	5,746	5,836	2,983	4,678	3,043	4,164	3,103	2,288	3,065		777	25.4%	
March	2,407	3,320	2,877	3,456	3,569	3,253	3,441	4,250	4,675	4,426	4,036	2,489	3,613	3,448	2,379	2,464	1,974	1,610		-364	-22.6%	
April	4,205	4,419	3,826	4,248	4,772	5,350	5,121	5,855	7,049	6,234	6,063	3,788	4,973	4,348	3,037	3,573	2,779	0		-2,779	-28.6%	
May	3,689	3,954	3,658	4,998	4,857	4,962	4,188	5,443	6,512	6,174	5,574	3,549	2,946	2,902	3,290	3,465	2,856	0		-2,856	0.0%	
June	1,582	1,707	1,310	2,055	2,249	2,798	2,124	2,422	2,632	2,703	2,265	2,046	1,547	1,104	1,586	1,314	1,100	0		-1,100	0.0%	
TOTAL	29,058	35,312	30,343	37,416	40,179	40,951	42,159	46,055	50,435	50,591	48,110	31,885	41,737	32,114	28,459	28,594	24,551	17,805	0	-6,746	-37.9%	
Sat	0	0	0	0%	232	356	535	683	791	760	627	594	525	554	609	486	376	0	0	0	-110	-29.3%
Grand Total	29,058	35,312	30,343	37,416	40,411	41,307	42,694	46,738	51,226	51,351	48,737	32,479	42,262	32,539	29,013	29,203	25,037	18,181	0	-6,856	-37.7%	

5 days averaged; passes not counted during Try Transit Week.

Sept 2002: College classes began approximately 2 weeks later than usual.

July 2003: Cut 4 runs.

Jan. 2004: 2 snow days + MLK day.

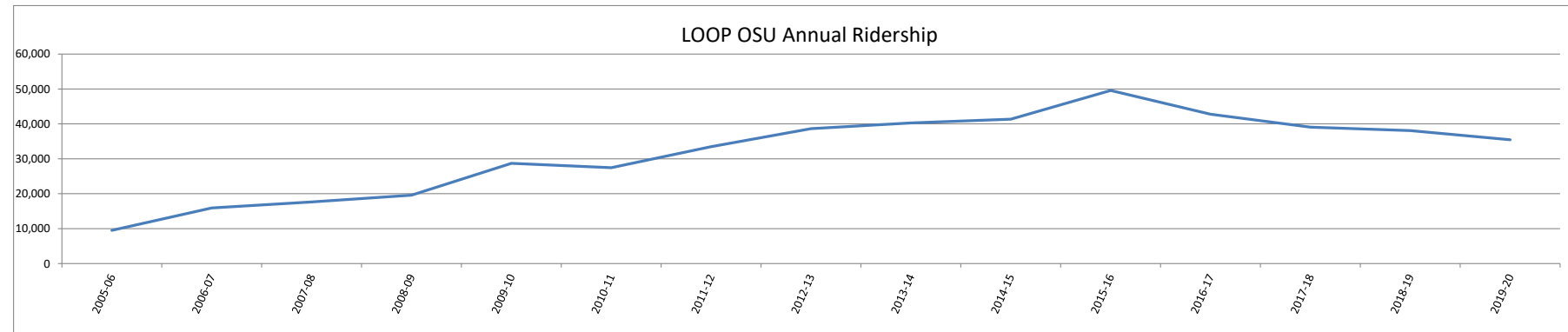
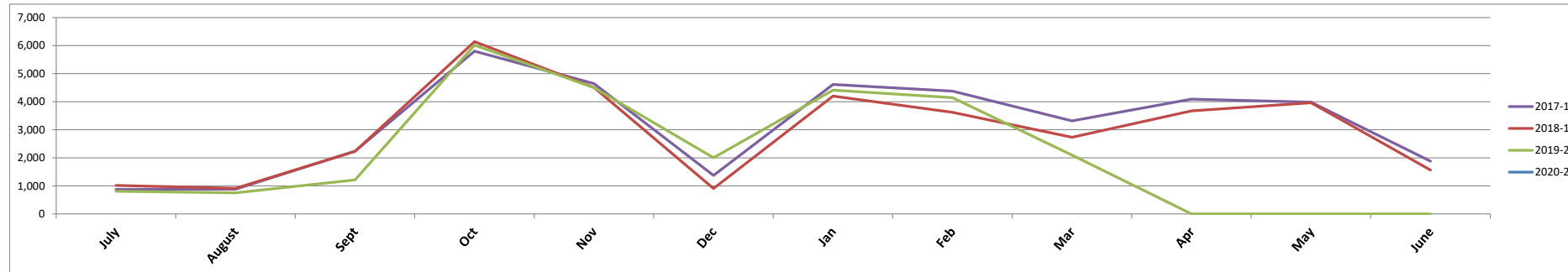


LINN-BENTON LOOP
OSU PASS PROGRAM

2020-2021

MONTH	2004-05	2005-06	2006-07	2007-08	2008-09	2009-10	2010-11	2011-12	2012-13	2013-14	2014-15	2015-16	2016-17	2017-18	2018-19	2019-20	20-21	+/-	Ratio
July	153	467	1,126	849	1,786	1,001	837	1,301	1,652	1,783	1,826	1,366	970	873	1,017	810		-207	-25.6%
August	564	590	854	869	1,262	662	849	1,390	1,582	1,439	1,337	1,202	988	880	909	750		-159	-21.2%
Sept	532	1,007	1,171	1,089	1,217	1,191	1,685	2,250	2,140	1,242	2,033	1,875	2,428	2,236	2,232	1,212		-1,020	-84.2%
Oct	1,068	1,866	2,278	2,308	3,962	3,841	4,295	5,071	5,717	6,213	7,959	6,872	5,370	5,802	6,142	6,016		-126	-2.1%
Nov	1,073	1,648	1,870	1,863	2,629	2,720	3,971	4,237	4,020	4,448	5,190	4,381	4,435	4,644	4,507	4,503		-4	-0.1%
Dec	488	730	705	719	1,379	1,259	1,587	1,297	1,239	2,035	2,770	1,893	1,343	1,372	906	2,004		1,098	54.8%
Jan	1,068	2,254	1,607	2,175	3,345	3,418	4,099	3,749	4,711	5,084	5,658	5,399	3,934	4,612	4,199	4,411		212	4.8%
Feb	975	1,615	1,623	2,092	3,108	3,046	3,499	4,123	4,619	3,949	5,223	4,890	4,991	4,379	3,623	4,144		521	12.6%
Mar	832	1,230	1,320	1,546	2,185	2,553	2,986	3,080	3,111	3,206	4,235	4,345	3,505	3,318	2,734	2,096		-638	-30.4%
Apr	1,064	1,577	1,885	2,227	3,355	3,476	4,191	4,943	4,992	5,005	6,259	4,864	4,476	4,094	3,672	0		-3,672	0.0%
May	1,029	1,822	2,045	2,238	2,842	2,942	3,529	4,763	4,443	4,362	4,647	4,038	4,540	3,984	3,965	0		-3,965	0.0%
June	661	1,102	1,168	1,621	1,654	1,335	1,931	2,440	2,036	2,588	2,442	1,636	2,107	1,881	1,561	0		-1,561	0.0%
Sub Total	9,507	15,908	17,652	19,596	28,724	27,444	33,459	38,644	40,262	41,354	49,579	42,761	39,087	38,075	35,467	25,946	0	73,542	100.0%
Saturday	0	0%	502	400	592	600	639	834	814	743	771	771	581	709	600	512	0	-88	-17.2%
Grand Total	9,507	15,908	18,154	19,996	29,316	28,044	34,098	39,478	41,076	42,097	50,350	43,532	39,668	38,784	36,067	26,458	0	-9,609	-36.3%

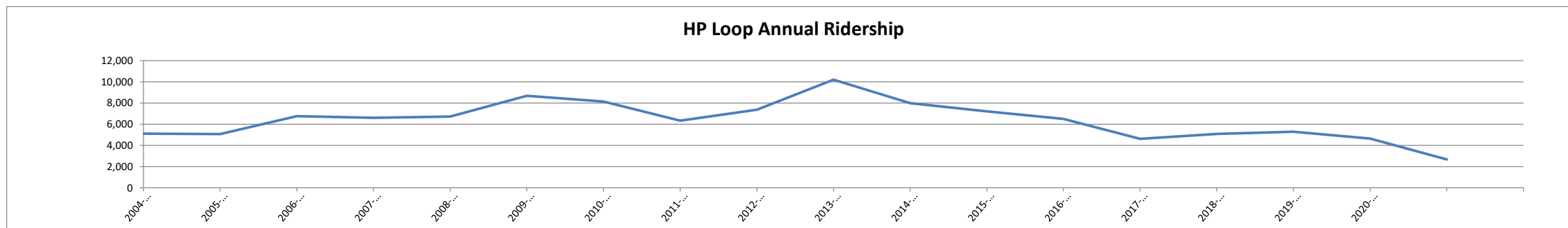
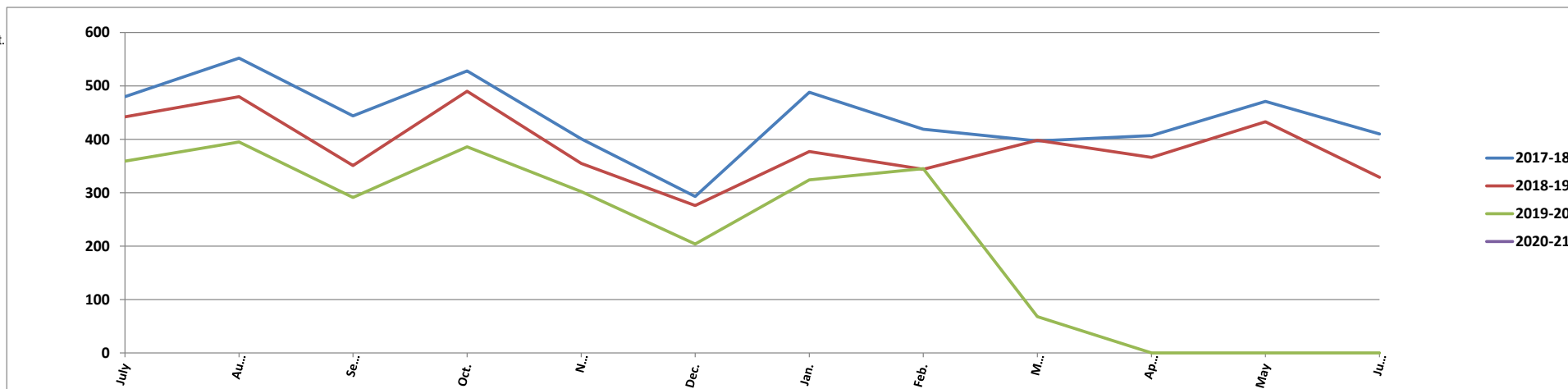
July 2004: Begin pass program
Try Transit



**LINN-BENTON LOOP
HEWLETT PACKARD
PASS PROGRAM
2020-21**

MONTH	2002-03	2003-04	2004-05	2005-06	2006-07	2007-08	2008-09	2009-10	2010-11	2011-12	2012-13	2013-14	2014-15	2015-16	2016-17	2017-18	2018-19	2019-20	2020-21	+/-	Ratio
July	336	501	540	551	580	627	1,091	496	532	766	819	592	599	458	373	480	442	359			
Aug.	423	370	525	591	655	728	954	512	554	921	699	733	518	342	435	552	480	395		-83	-23.1%
Sept.	405	385	463	712	460	656	949	536	598	802	607	699	688	375	420	444	351	291		-60	-20.6%
Oct.	467	412	551	708	524	666	847	619	544	950	755	700	696	420	444	528	490	386		-104	-26.9%
Nov.	313	262	550	528	520	709	648	547	520	732	587	553	476	328	365	401	355	302		-53	-17.5%
Dec.	307	262	377	359	385	453	473	313	401	520	398	378	406	272	259	293	276	204		-72	-35.3%
Jan.	476	363	529	570	526	700	563	631	570	842	693	733	557	371	394	488	377	324		-53	-16.4%
Feb.	500	388	480	463	499	638	443	514	583	812	723	531	535	440	374	419	344	345		1	0.3%
March	572	432	695	465	595	819	448	617	800	858	684	635	570	438	444	397	398	68		-330	-485.3%
April	494	477	707	437	577	852	550	528	685	933	664	602	515	364	527	407	366	0		-366	0.0%
May	407	547	714	605	744	775	527	533	724	1,046	688	535	459	381	568	471	433	0		-433	0.0%
June	409	666	625	612	656	1,063	645	490	848	1,017	666	516	488	425	474	410	329	0		-329	0.0%
Sub Total	5,109	5,065	6,756	6,601	6,721	8,686	8,138	6,336	7,359	10,199	7,983	7,207	6,507	4,614	5,077	5,290	4,641	2,674		-1,967	-73.6%
Saturday	0	0	0	0	5	25	6	11	6	29	18	4	5	5	11	6	30	40		10	0.0%
Grand Total	5,109	5,065	6,756	6,601	6,726	8,711	8,144	6,347	7,365	10,228	8,001	7,211	6,512	4,619	5,088	5,296	4,671	2,714		2,714	-72.1%

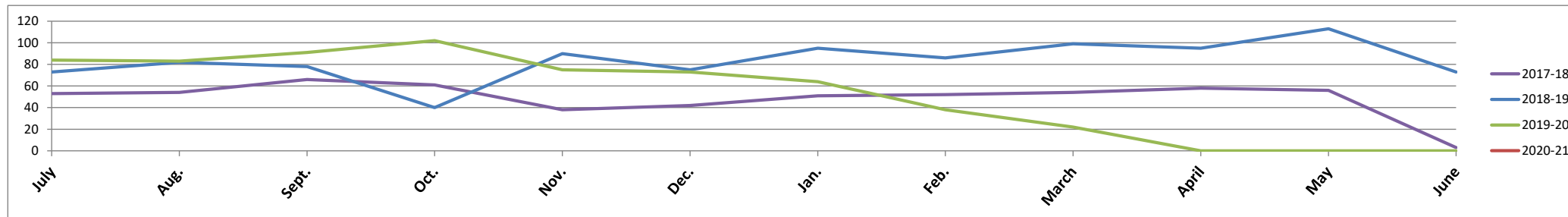
July 2003: Cut 4 runs. Sept. 2003: Runs restored.



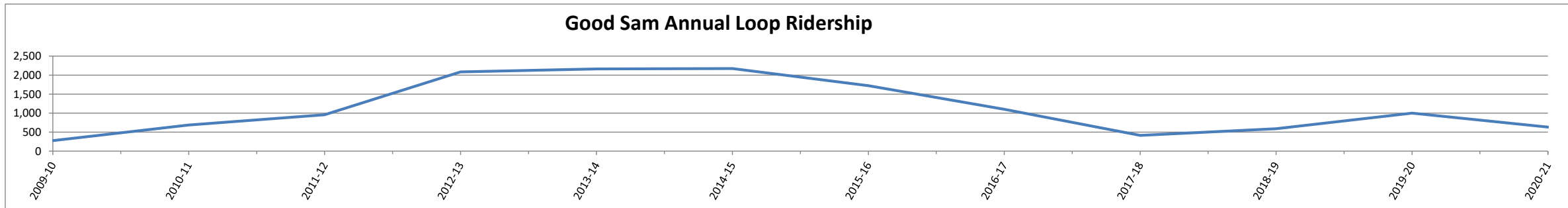
**LINN-BENTON LOOP
SAMARITAN PASS PROGRAM**

2019-2020													2020-21	+/-	Ratio
MONTH	2008-09	2009-10	2010-11	2011-12	2012-13	2013-14	2014-15	2015-16	2016-17	2017-18	2018-19	2019-20			
July		95	91	105	196	245	210	105	7	53	73	84		11	13.1%
Aug.		42	102	123	191	222	172	129	25	54	82	83		1	1.2%
Sept.		54	95	127	225	159	153	133	53	66	78	91		13	14.3%
Oct.		26	57	160	249	207	185	138	43	61	40	102		62	60.8%
Nov.	14	45	48	178	162	147	147	98	37	38	90	75		-15	-20.0%
Dec.	17	58	54	134	124	129	178	110	35	42	75	73		-2	-2.7%
Jan.	8	45	66	169	188	206	102	121	28	51	95	64		-31	-48.4%
Feb.	18	53	33	202	160	161	118	103	48	52	86	38		-48	-126.3%
March	15	57	59	220	160	189	99	84	22	54	99	22		-77	-350.0%
April	82	58	116	194	204	162	117	34	25	58	95	0		-95	0.0%
May	57	72	125	235	172	165	99	22	41	56	113	0		-113	0.0%
June	65	82	112	239	130	180	141	22	51	3	73	0		-73	0.0%
Sub Total	276	687	958	2,086	2,161	2,172	1,721	1,099	415	588	999	632		-367	-58.1%
Saturday	3	2	5	16	34	14	11	11	13	2	7	5		-745	-40.0%
Grand Total	279	689	963	2,102	2,195	2,186	1,732	1,110	428	590	1,006	637		-1,112	-57.9%

*This does not include the Saturday Loop.



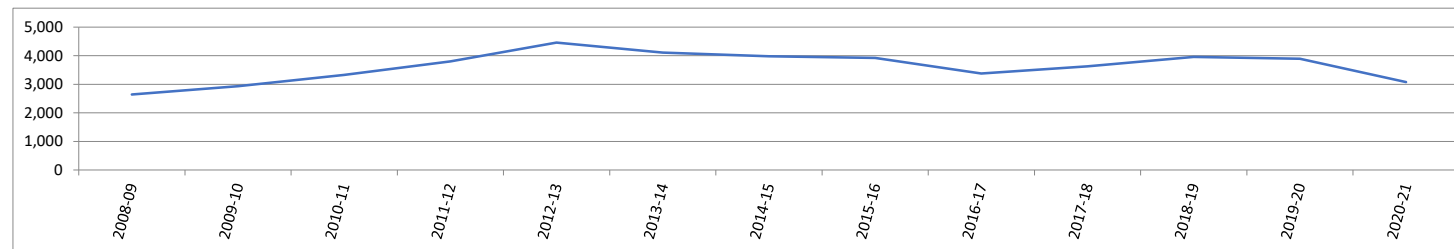
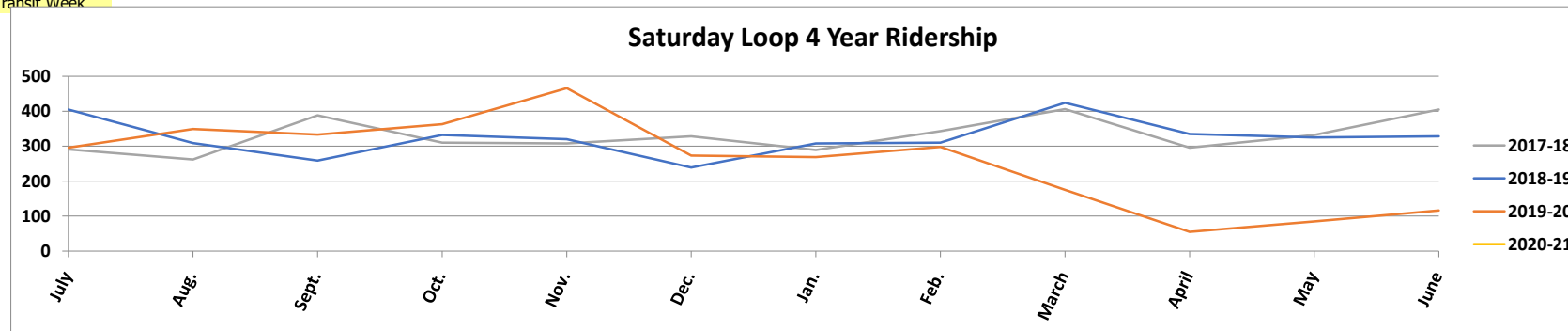
Good Sam Annual Loop Ridership



**LINN-BENTON LOOP
SATURDAY SERVICE
2019-2020**

MONTH	2006-07	2007-08	2008-09	2009-10	2010-11	2011-12	2012-13	2013-14	2014-15	2015-16	2016-17	2017-18	2018-19	2019-20	2020-21	+/-	Ratio
July		93	147	160	250	356	252	262	274	195	315	291	405	296		-109	-36.8%
Aug.	90	245	241	227	235	339	267	400	353	325	219	262	309	349		40	11.5%
Sept.	185	229	227	209	294	323	494	324	317	247	259	388	259	333		74	22.2%
Oct.	212	171	239	303	349	497	321	307	436	375	407	310	332	363		31	8.5%
Nov.	165	217	334	388	350	366	318	444	346	282	334	308	320	466		146	31.3%
Dec.	199	226	184	161	180	353	407	232	244	239	333	328	239	273		34	12.5%
Jan.	160	175	358	356	331	354	265	309	344	314	206	289	308	269		-39	-14.5%
Feb.	177	235	235	264	345	369	377	227	298	251	258	343	310	298		-12	-4.0%
March	206	257	232	334	349	399	385	421	342	271	276	406	424	175		-249	-142.3%
April	176	253	242	320	472	337	294	323	295	333	362	296	335	55		-280	-509.1%
May	147	275	251	357	340	367	319	400	403	246	339	332	325	85		-240	-282.4%
June	221	267	241	246	309	399	409	328	271	298	321	405	328	116		-212	-182.8%
Totals	1,938	2,643	2,931	3,325	3,804	4,459	4,108	3,977	3,923	3,376	3,629	3,958	3,894	3,078	0	-816	-1.6%

Oct. Try Transit Week

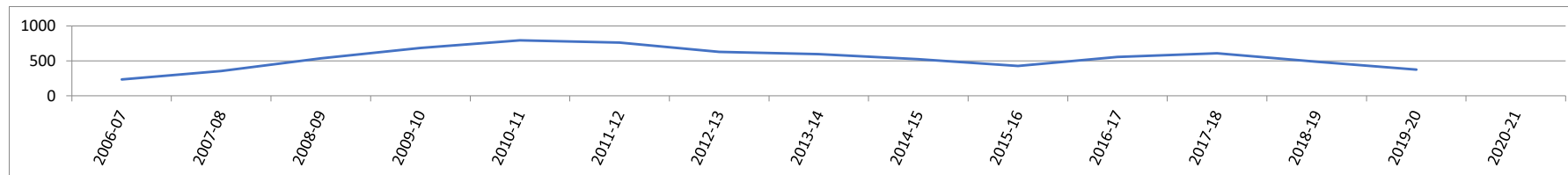
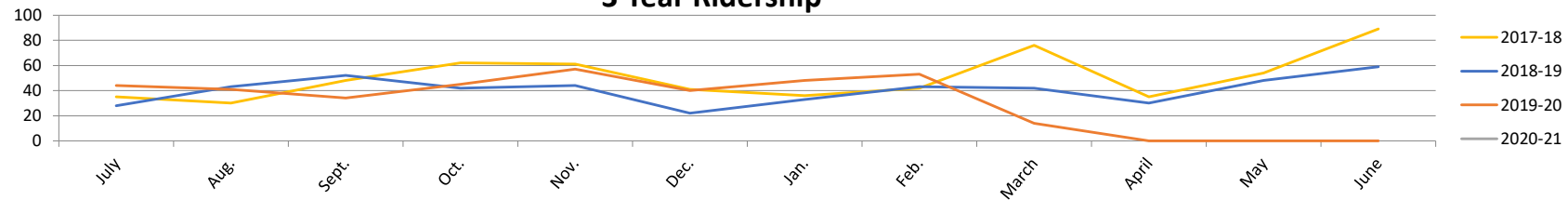


**LINN-BENTON LOOP
LBCC PASS PROGRAM
SATURDAY SERVICE 2019-2020**

MONTH	2006-07	2007-08	2008-09	2009-10	2010-11	2011-12	2012-13	2013-14	2014-15	2015-16	2016-17	2017-18	2018-19	2019-20	2020-21	+/-	Ratio
July		8	16	18	37	44	56	51	35	19	36	35	28	44		16	36.4%
Aug.	12	2	30	31	33	48	28	48	42	36	18	30	43	41		-2	-4.9%
Sept.	17	18	31	22	35	44	56	43	35	27	29	48	52	34		-18	-52.9%
Oct.	22	12	23	46	72	66	38	48	56	39	58	62	42	45		3	6.7%
Nov.	28	16	50	74	69	75	55	70	57	41	43	61	44	57		13	22.8%
Dec.	33	37	50	41	40	84	57	32	37	23	54	41	22	40		18	45.0%
Jan.	19	24	74	66	92	69	61	61	43	34	33	36	33	48		15	31.3%
Feb.	19	43	48	70	82	68	53	31	45	41	54	42	43	53		10	18.9%
March	23	54	50	95	84	72	68	52	40	31	47	76	42	14		-28	-200.0%
April	19	58	53	85	86	63	39	63	52	54	64	35	30	0		-5	-16.7%
May	13	42	58	83	92	45	50	59	48	40	52	54	48	0		-6	-12.5%
June	27	42	52	52	69	82	66	36	35	40	66	89	59	0		-59	#DIV/0!
Totals	232	356	535	683	791	760	627	594	525	425	554	609	486	376		-123	-32.7%

Oct. Try Transit Week

**Saturday Loop LBCC Pass
3 Year Ridership**

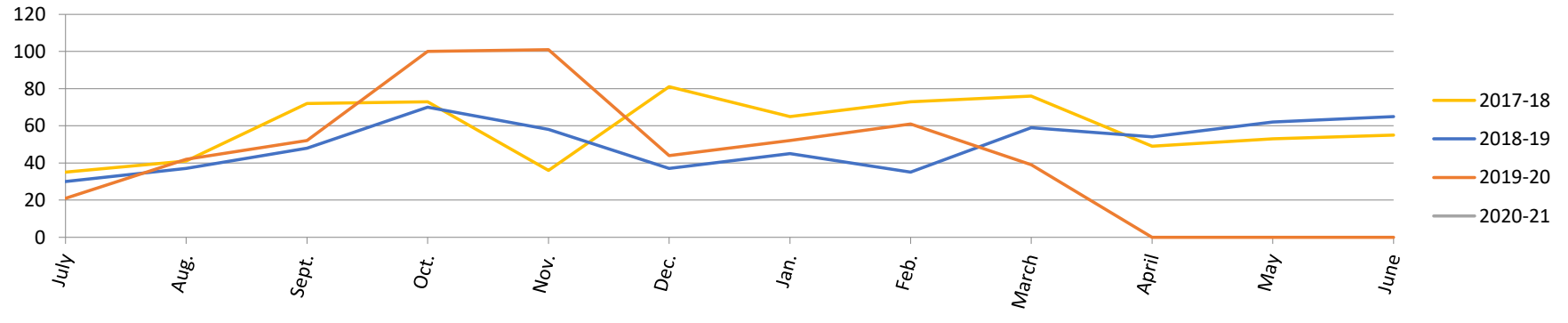


OSU PASS PROGRAM

SATURDAY SERVICE 2019-2020

MONTH	2006-07	2007-08	2008-09	2009-10	2010-11	2011-12	2012-13	2013-14	2014-15	2015-16	2016-17	2017-18	2018-19	2019-20	2020-21	+/-	Ratio
July		19	35	27	21	37	38	40	34	39	43	35	30	21		-9	-42.9%
Aug.	15	37	46	28	47	37	45	75	42	58	23	41	37	42		5	11.9%
Sept.	50	23	30	32	69	62	123	72	64	41	33	72	48	52		4	7.7%
Oct.	48	24	44	59	65	125	89	51	80	50	66	73	70	100		30	30.0%
Nov.	52	24	50	53	78	65	54	98	92	38	47	36	58	101		43	42.6%
Dec.	45	30	27	32	18	47	74	43	52	37	54	81	37	44		7	15.9%
Jan.	69	28	89	92	59	68	50	71	61	71	35	65	45	52		7	13.5%
Feb.	64	36	48	51	62	69	70	37	55	10	54	73	35	61		26	42.6%
March	45	40	43	62	48	81	98	78	80	66	57	76	59	39		-20	-51.3%
April	43	28	52	57	81	60	61	72	72	61	61	49	54	0		5	0.0%
May	25	53	73	83	60	91	52	48	88	35	53	53	62	0		9	0.0%
June	46	58	55	24	31	92	60	58	51	42	55	55	65	0		0	0.0%
Totals	502	400	592	600	639	834	814	743	771	548	581	709	600	512		-109	-17.2%

Oct. Try Transit Week

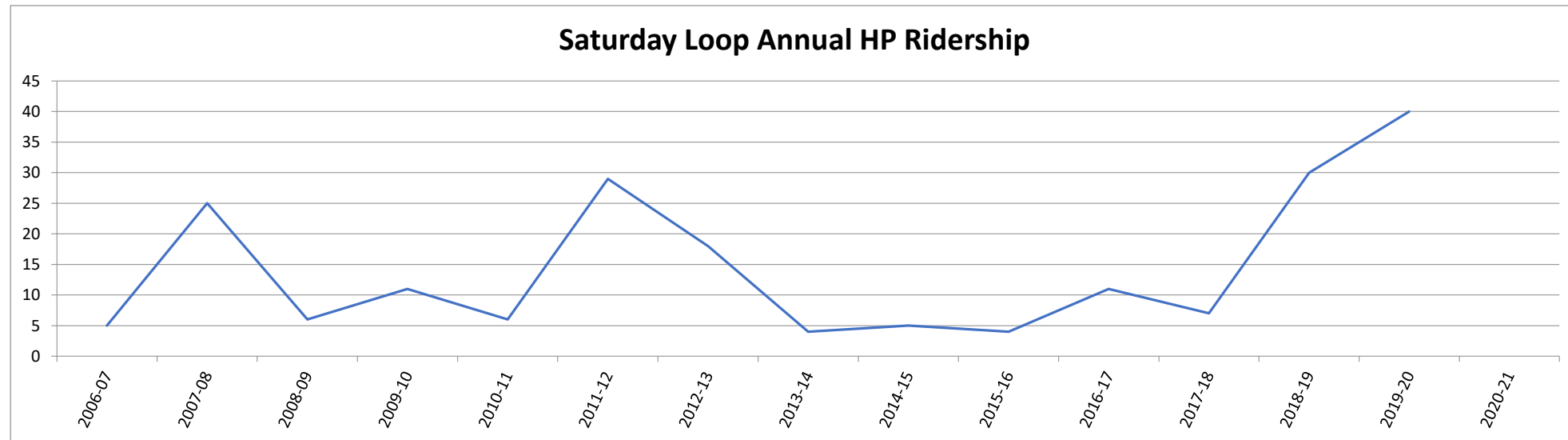


Saturday Loop OSU Annual Ridership



LINN BENTON LOOP HP PASS PROGRAM SATURDAY SERVICE 2020-2021

MONTH	2006-07	2007-08	2008-09	2009-10	2010-11	2011-12	2012-13	2013-14	2014-15	2015-16	2016-17	2017-18	2018-19	2019-20	2020-21	+/-	Ratio
July		0	0	0	0	0	1	3	2	2	2	1	1	9		8	88.89%
Aug.	0	0	0	1	0	0	7	0	3	0	2	0	0	9		9	100.00%
Sept.	1	0	0	3	0	0	2	0	0	2	3	0	0	8		8	100.00%
Oct.	2	0	0	2	0	1	3	1	0	0	0	0	4	3		-1	-33.33%
Nov.	0	1	1	2	0	0	3	0	0	0	0	3	1	8		7	87.50%
Dec.	2	3	0	1	0	0	0	0	0	0	2	0	0	2		2	100.00%
Jan.	0	5	4	0	0	1	1	0	0	0	2	0	6	0		-6	0.00%
Feb.	0	4	0	0	1	3	0	0	0	0	0	0	0	1		1	100.00%
March	0	6	0	0	0	6	0	0	0	0	0	0	6	0		-6	0.00%
April	0	3	0	2	3	4	0	0	0	0	0	0	0	0		0	0.00%
May	0	2	1	0	2	9	0	0	0	0	0	2	3	0		-3	#DIV/0!
June	0	1	0	0	0	5	1	0	0	0	0	1	9	0		-9	#DIV/0!
Totals	5	25	6	11	6	29	18	4	5	4	11	7	30	40		23	25.00%

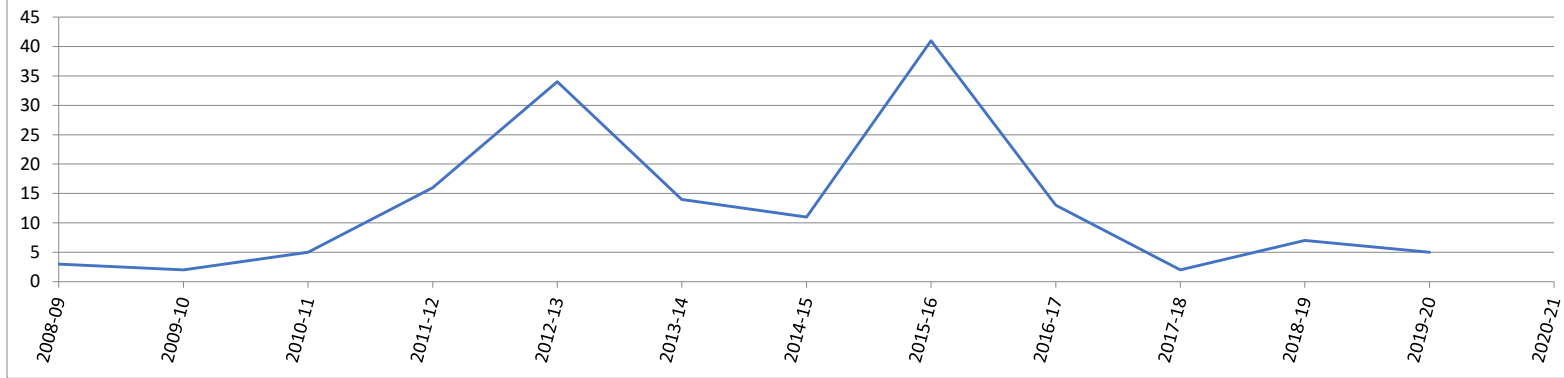


LINN-BENTON LOOP SAMARITAN PASS PROGRAM SATURDAY SERVICE 2019-2020

MONTH	2008-09	2009-10	2010-11	2011-12	2012-13	2013-14	2014-15	2015-16	2016-17	2017-18	2018-19	2019-20	2020-21	+/-	Ratio
July	0	0	2	0	0	3	2	2	2	0	3	1		-2	#####
Aug.	0	0	0	0	4	4	1	6	1	0	0	0		0	0.00%
Sept.	0	0	0	0	3	0	1	6	0	0	1	0		-1	0.00%
Oct.	0	0	2	0	3	2	2	3	0	0	0	1		1	100.00%
Nov.	1	0	0	2	3	3	0	10	4	0	1	3		2	66.67%
Dec.	0	0	0	3	3	1	0	1	4	0	0	0		0	0.00%
Jan.	1	0	1	5	3	0	0	1	0	0	0	0		0	0.00%
Feb.	0	0	0	0	0	0	0	1	0	0	0	0		0	0.00%
March	1	0	0	4	5	0	0	3	0	2	0	0		0	0.00%
April	0	0	0	0	4	1	2	4	0	0	0	0		0	0.00%
May	0	0	0	1	5	0	2	3	2	0	0	0		0	0.00%
June	0	2	0	1	1	0	1	1	0	0	2		-2	#DIV/0!	
Totals	3	2	5	16	34	14	11	41	13	2	7	5		5	-0.4

Oct. Try Transit Week

Saturday Loop Sam Annual Ridership



07/28/2020
08:16:52City of Albany, OR
FLEXIBLE PERIOD REPORT
PP 06PAGE 1
gflxlrpt

FROM 2020 10 TO 2020 13

ACCOUNTS FOR:	ORIGINAL	TRANFRS/	REVISED	ACTUALS	ENCUMBRANCES	AVAILABLE	PCT
213 PUBLIC TRANSIT	APPROP	ADJSTMTS	BUDGET			BUDGET	USED
<hr/>							
21340105 213 LINN-BENTON LOOP							
21340105 420035 FTA SECTION 5310 GRANT	-27,500	0	-27,500	-14,160.00		-13,340.00	51.5%
21340105 420045 FTA SECTION 5307	-333,200	0	-333,200	-82,707.00		-250,493.00	24.8%
21340105 428020 SPECIAL TRANSIT FUND: LINN	-24,000	0	-24,000	-11,520.00		-12,480.00	48.0%
21340105 428025 SPECIAL TRANSIT FUND: BENT	-23,000	0	-23,000	.00		-23,000.00	.0%
21340105 428120 STIF - LINN COUNTY	-12,500	0	-12,500	.00		-12,500.00	.0%
21340105 428125 STIF - BENTON COUNTY	-12,500	0	-12,500	-105,125.00		92,625.00	841.0%
21340105 428200 LBCC PARTNERSHIP	-120,800	0	-120,800	.00		-120,800.00	.0%
21340105 428205 OSU PARTNERSHIP	-120,800	0	-120,800	.00		-120,800.00	.0%
21340105 435000 BUS FARES	-26,000	0	-26,000	-776.46		-25,223.54	3.0%
21340105 480100 INTEREST	-300	0	-300	-128.48		-171.52	42.8%
21340105 510010 WAGES & SALARIES	237,600	0	237,600	46,479.49		191,120.51	19.6%
21340105 520010 TEMPORARY EMPLOYEES	36,100	0	36,100	2,423.51		33,676.49	6.7%
21340105 530010 OVERTIME	3,300	0	3,300	.00		3,300.00	.0%
21340105 540050 UNEMPLOYMENT CLAIMS	800	0	800	.00		800.00	.0%
21340105 560001 EMPLOYER MEDICAL	0	0	0	15,543.28		-15,543.28	.0%
21340105 560005 EMPLOYER DENTAL	0	0	0	1,160.48		-1,160.48	.0%
21340105 560008 EMPLOYER VISION	0	0	0	468.39		-468.39	.0%
21340105 560010 EMPLOYER PAID BENEFITS	244,600	0	244,600	7,320.59		237,279.41	3.0%
21340105 560020 PERS	0	0	0	16,829.04		-16,829.04	.0%
21340105 560030 HRA VEBA	0	0	0	240.01		-240.01	.0%
21340105 600115 INSURANCE & BONDS	8,800	0	8,800	-7,617.63		16,417.63	86.6%
21340105 600400 CONTRACTUAL SERVICES	500	0	500	-340.70		2,472.54	394.5%
21340105 610005 ADVERTISING & PUBLICATIONS	0	0	0	-1,116.27		1,116.27	.0%
21340105 610100 DUPLICATION & FAX	1,300	0	1,300	102.14		1,300.00	.0%
21340105 610405 MATERIALS & SUPPLIES	3,000	0	3,000	-1,445.53		4,660.13	55.3%
21340105 610545 PRINTING & BINDING	800	0	800	.00		800.00	.0%
21340105 610750 UNIFORMS	500	0	500	.00		500.00	.0%
21340105 610800 VEHICLE FUEL CHARGES	40,000	0	40,000	4,861.30		35,138.70	12.2%
21340105 630000 ELECTRICITY	0	0	0	-627.43		949.21	.0%
21340105 630005 NATURAL GAS	0	0	0	-48.37		11.96	.0%
21340105 630010 TELEPHONE	0	0	0	-24.86		24.86	.0%
21340105 630400 WATER SERVICE	0	0	0	-427.59		427.59	.0%
21340105 630410 STORMWATER SERVICE CHARGES	0	0	0	-57.78		57.78	.0%
21340105 653600 MAINT: VEHICLE	41,100	0	41,100	30,266.32		12,010.82	70.8%
21340105 660200 CS: CENTRAL SERVICE	38,500	0	38,500	9,625.03		28,874.97	25.0%
21340105 660400 CS: EQUIPMENT REPLACEMENT	3,000	0	3,000	750.00		2,250.00	25.0%
21340105 660500 CS: FLEXIBLE SPENDING ADMI	200	0	200	42.55		157.45	21.3%
21340105 662500 PW: ADMINISTRATION	31,900	0	31,900	3,460.68		28,439.32	10.8%

07/28/2020
08:16:52City of Albany, OR
FLEXIBLE PERIOD REPORT
PP 06PAGE 2
gflxrpt

FROM 2020 10 TO 2020 13

ACCOUNTS FOR:
213 PUBLIC TRANSIT

	ORIGINAL APPROP	TRANFRS/ ADJSTMTS	REVISED BUDGET	ACTUALS	ENCUMBRANCES	AVAILABLE BUDGET	PCT USED
21340105 665400 PHYSICAL EXAMS & MEDICALS	300	0	300	184.00		116.00	61.3%
21340105 690000 RESERVE: OPERATING	8,300	0	8,300	.00		8,300.00	.0%
21340105 700000 CAPITAL EQUIPMENT	0	880,000	880,000	.00		-93,700.50	110.6%
TOTAL 213 LINN-BENTON LOOP	0	880,000	880,000	-86,366.29		-3,923.12	%
TOTAL PUBLIC TRANSIT	0	880,000	880,000	-86,366.29		-3,923.12	%
TOTAL REVENUES	-700,600	0	-700,600	-214,416.94		-486,183.06	
TOTAL EXPENSES	700,600	880,000	1,580,600	128,050.65		482,259.94	



07/28/2020
08:16:52

City of Albany, OR
FLEXIBLE PERIOD REPORT
PP 06

PAGE 3
gflxrpt

FROM 2020 10 TO 2020 13

	ORIGINAL APPROP	TRANFRS/ ADJSTMTS	REVISED BUDGET	ACTUALS	ENCUMBRANCES	AVAILABLE BUDGET	PCT USED
GRAND TOTAL	0	880,000	880,000	-86,366.29		-3,923.12	%



07/28/2020
08:16:52

City of Albany, OR
FLEXIBLE PERIOD REPORT
PP 06

PAGE 4
gflxrpt

REPORT OPTIONS

Sequence	Field #	Total	Page Break	
Sequence 1	1	Y	Y	From Yr/Per: 2020/10
Sequence 2	9	Y	N	To Yr/Per: 2020/13
Sequence 3	0	N	N	Budget Year: 2020
Sequence 4	0	N	N	Print totals only: N

Report title:

FLEXIBLE PERIOD REPORT
PP 06

Includes accounts exceeding 0% of budget.

Print Full or Short description: F

Print full GL account: N

Sort by full GL account: N

Print Revenues-Version headings: N

Print revenue as credit: Y

Print revenue budgets as zero: N

Format type: 1

Double space: N

Suppress zero bal accts: Y

Amounts/totals exceed 999 million dollars: N

Roll projects to object: N

Print journal detail: N

From Yr/Per: 2020/12

To Yr/Per: 2020/13

Include budget entries: N

Incl encumb/liq entries: N

Sort by JE # or PO #: J

Detail format option: 1

Multiyear view: D