

ORDINANCE NO. 5745

AN ORDINANCE TO LEVY ASSESSMENTS AGAINST PROPERTY SPECIFICALLY BENEFITED BY SEWER CONNECTIONS AND THE ASSESSMENT OF SEWER AND TRANSPORTATION SYSTEM DEVELOPMENT CHARGES FOR PROPERTY DESCRIBED AS TAX LOT 200, OF PARCEL 11S-04W-25AD, AND SITE ADDRESS 859 BELMONT AVE, AND DECLARING AN EMERGENCY.

WHEREAS, the Sewer System Development Charge, as referred to in this ordinance, is to provide sewer connections to serve the structures on this property; and

WHEREAS, the Transportation System Development Charge is intended to assess charges for future expansion or capacity increases to the system, and is aimed at providing additional levels of services to the existing road network; and

WHEREAS, these charges will be assessed on the property described as Tax Lot 200, of Parcel number 11S-04W-25AD, and site address 859 Belmont Ave. (See attached **Exhibit "A"**)

NOW THEREFORE, THE PEOPLE OF THE CITY OF ALBANY DO ORDAIN AS FOLLOWS:

Section 1: The Sewer and Transportation System Development Charges and the assessments for the same will be levied according to the provisions of Albany Municipal Code, Chapter 15.16.

Section 2: The total cost of the Sewer and Transportation System Development Charges is \$38,280.13.

(See attached assessment sheet)

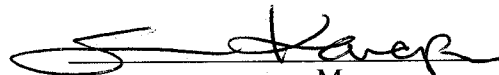
Section 3: The City Recorder is hereby directed to enter a statement of the assessments as provided above in the docket of the City liens and give notice thereof as provided by law.

Section 4: Inasmuch as this ordinance is necessary for the immediate preservation of the peace, health, and safety of the City of Albany, Oregon, an emergency is hereby declared to exist; and this ordinance will be in full force and effect immediately upon passage by the Council and approval by the Mayor.

Passed by the Council: August 11, 2010


Approved by the Mayor: August 11, 2010

Effective Date: August 11, 2010

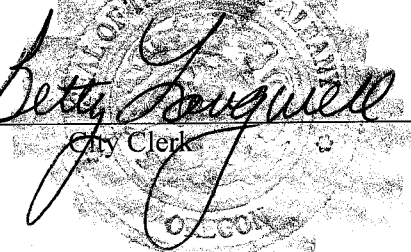


Mayor

ATTEST:



City Clerk



Owner of Record

Property Description

Assessment Description

Tim S. Siddiqui
133 Fifth Avenue Se
Albany, Or 97322

859 Belmont Ave
Albany, OR 97321
11S 04W 25AD 00200

Sewer SDC
Amount: \$ 17,627.00
Acct # ssdc0004-0001-000

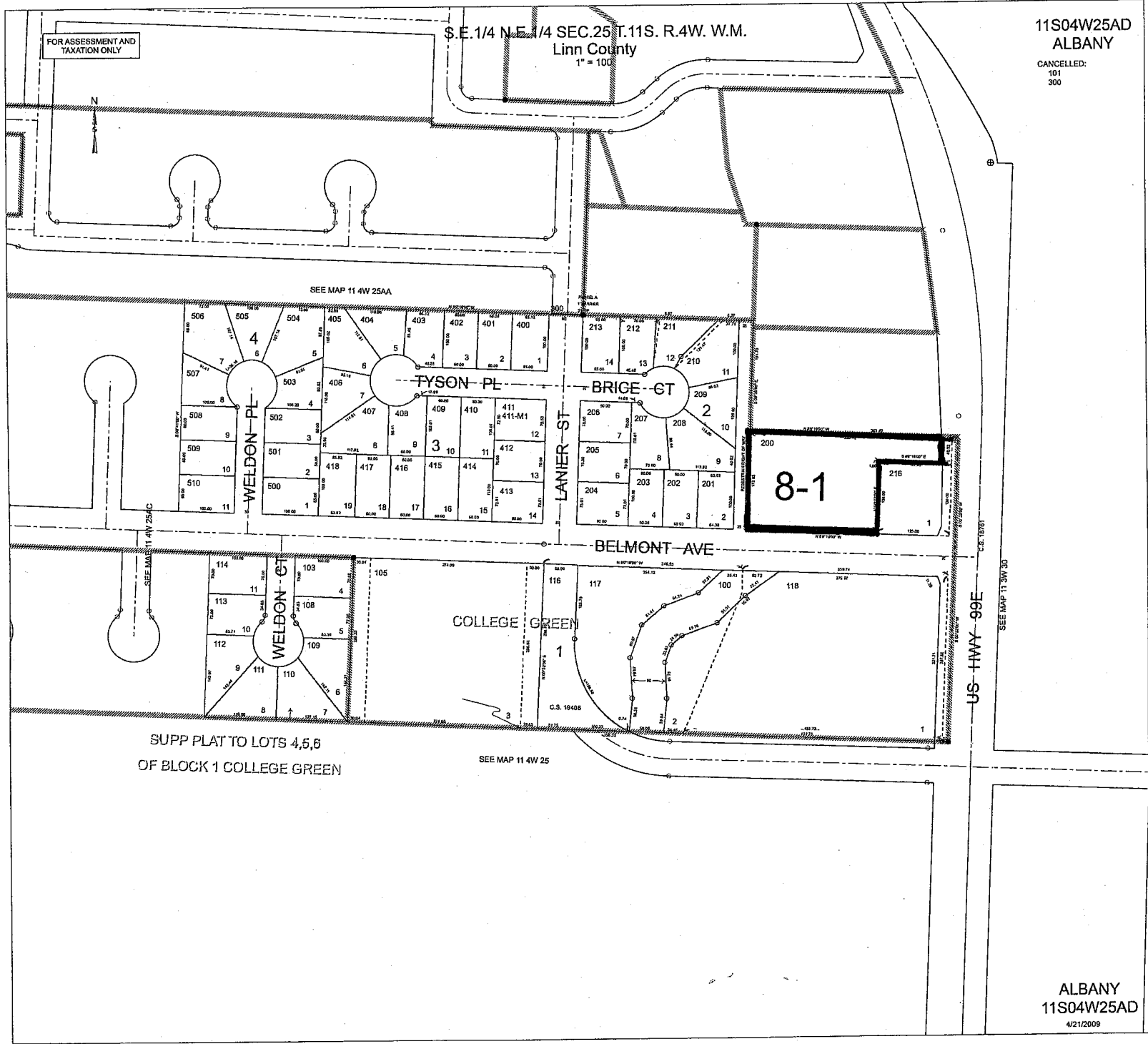
Tim S. Siddiqui
133 Fifth Avenue Se
Albany, Or 97322

859 Belmont Ave
Albany, OR 97321
11S 04W 25AD 00200

Transportation SDC
Amount: \$20,653.13
Acct # stsd0004-0001-000

Report Total: \$38,280.13

Exhibit "A"



FOR ASSESSMENT AND TAXATION ONLY

§ E. 1/4 N.E. 1/4 SEC. 25 T. 11S. R. 4W. W.M.
Linn County
1" = 100'

11S04W25AD
ALBANY
CANCELLED:
101
300

SEE MAP 11 4W 25AA

506 505 504 405 404 403 402 401 400
 507 508 509 500
 502 501
 408 407 406 405 404 403 402 401 400
 418 417 416 415 414 413 412 411
 410 409 408 407 406 405 404 403 402 401 400
 411-M1 412 413 414 415 416 417 418 419 420

213 212 211
 210 209 208 207 206 205 204 203 202 201
 200 216 215 214 213 212 211 210 209 208 207 206 205 204 203 202 201

8-1

SUPP PLAT TO LOTS 4,5,6
OF BLOCK 1 COLLEGE GREEN

SEE MAP 11 4W 25

ALBANY
11S04W25AD
4/21/2009