

AN ORDINANCE TO LEVY ASSESSMENTS AGAINST PROPERTY SPECIFICALLY BENEFITED BY SEWER AND WATER CONNECTIONS AND THE ASSESSMENT OF SEWER, WATER, PARKS, AND TRANSPORTATION SYSTEM DEVELOPMENT CHARGES FOR PROPERTY DESCRIBED AS TAX LOT 3800, OF PARCEL 11S-03W-17AA, AND SITE ADDRESS 2476 BAIN CT SE; AND DECLARING AN EMERGENCY.

WHEREAS, the Sewer and Water System Development Charges, as referred to in this ordinance, are to provide sewer and water connections to serve the structures on this property; and

WHEREAS, the Transportation System Development Charge is intended to assess charges for future expansion or capacity increases to the system, and is aimed at providing additional levels of services to the existing road network; and

WHEREAS, the Parks System Development Charge is intended to impose a portion of the public cost of capital improvements for parks upon properties where developments create the need, or increase the demand for park improvements; and

WHEREAS, these charges will be assessed on the property described as Tax Lot 3800, of Parcel number 11S-03W-17AA, and site address 2476 Bain Ct SE. (See attached **Exhibit "A"**)

NOW THEREFORE, THE PEOPLE OF THE CITY OF ALBANY DO ORDAIN AS FOLLOWS:

Section 1: The Sewer, Water, and Transportation System Development Charges and the assessments for the same will be levied according to the provisions of Albany Municipal Code, Chapter 15.16. The Parks System Development Charge and the assessment for the same will be levied according to the provision of Albany Municipal Code, Chapter 15.20.

Section 2: The total cost of the Sewer, Water, Transportation, and Parks System Development Charges is \$7,588.80.

(See attached assessment sheet)

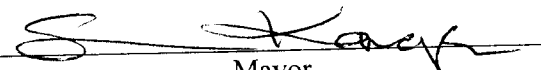
Section 3: The City Recorder is hereby directed to enter a statement of the assessments as provided above in the docket of the City liens and give notice thereof as provided by law.

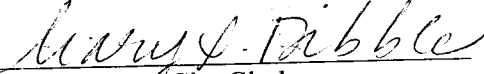
Section 4: Inasmuch as this ordinance is necessary for the immediate preservation of the peace, health, and safety of the City of Albany, Oregon, an emergency is hereby declared to exist; and this ordinance will be in full force and effect immediately upon passage by the Council and approval by the Mayor.

Passed by the Council: Feb 24, 2010

Approved by the Mayor: Feb 24, 2010

Effective Date: Feb 24, 2010

  
\_\_\_\_\_  
Mayor

ATTEST:   
\_\_\_\_\_  
Deputy City Clerk

Owner of Record

Property Description

Assessment Description

Stephanie Fry Inc  
777 Sahalee Dr SE  
Salem, OR 97306

2476 Bain Ct SE  
Albany, OR 97322  
11S 03W 17AA 03800

Parks SDC  
Amount: \$ 1,411.80  
Acct # psdc0001-0005-000

Stephanie Fry Inc  
777 Sahalee Dr SE  
Salem, OR 97306

2476 Bain Ct SE  
Albany, OR 97322  
11S 03W 17AA 03800

Sewer SDC  
Amount: \$2,402.00  
Acct # ssdc0001-0005-000

Stephanie Fry Inc  
777 Sahalee Dr SE  
Salem, OR 97306

2476 Bain Ct SE  
Albany, OR 97322  
11S 03W 17AA 03800

Transportation SDC  
Amount: \$ 1,734.00  
Acct # stsd0001-0004-000

Stephanie Fry Inc  
777 Sahalee Dr SE  
Salem, OR 97306

2476 Bain Ct SE  
Albany, OR 97322  
11S 03W 17AA 03800

Water SDC  
Amount: \$ 2,041.00  
Acct # wsd0001-0004-000

Report Total: \$7,588.80

THIS MAP WAS PREPARED FOR ASSESSMENT PURPOSES ONLY

Exhibit "A"  
NE 1/4 NE 1/4 SEC. 17 T. 11 S. R. 03 W. W.M.  
LINN COUNTY, OREGON

1" = 100'

11 3W 17AA  
ALBANY

SEE MAP 11 3W 17A

22ND PL

22ND AVE

8-27

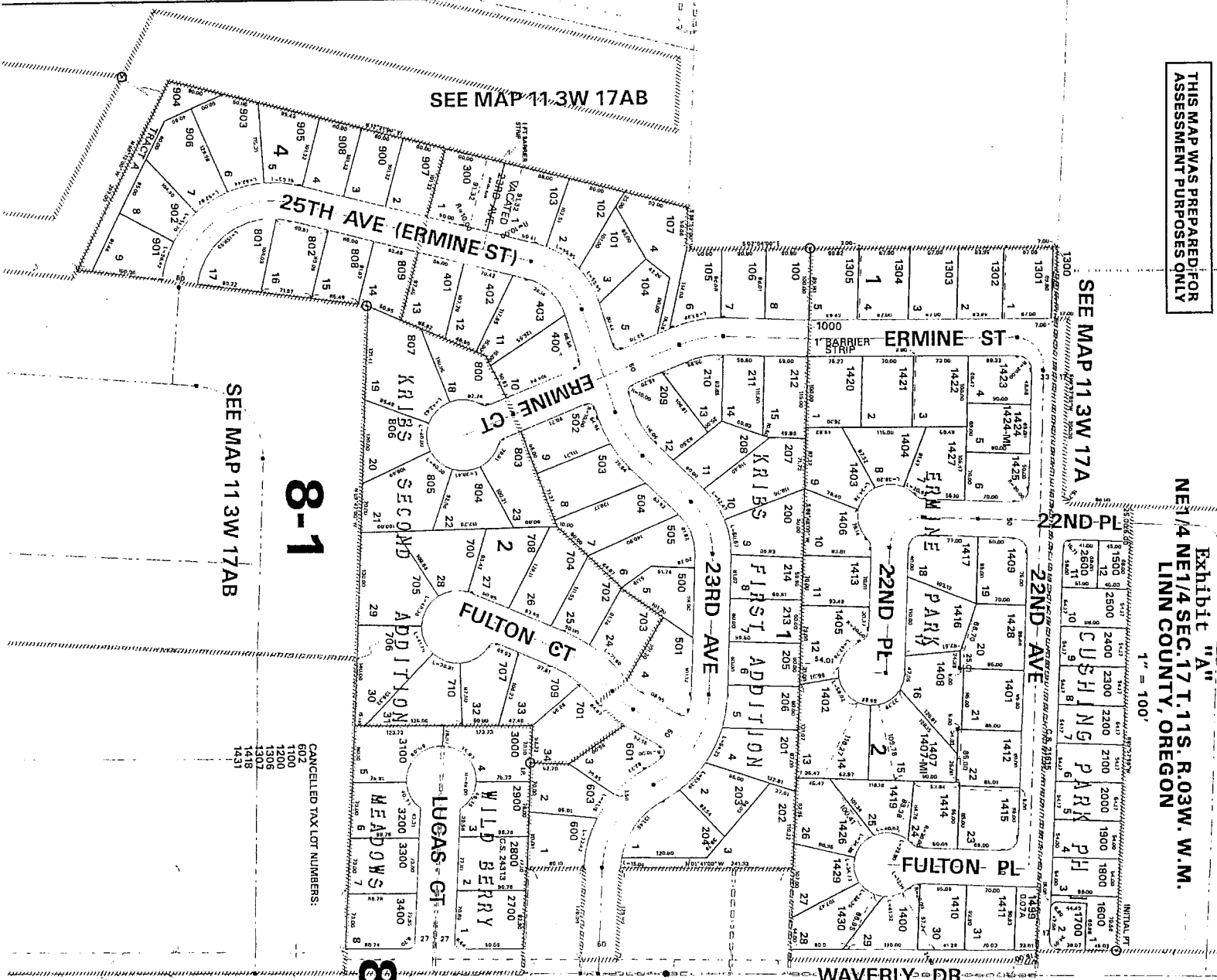
SEE MAP 11 3W 17A

8-27

SEE MAP 11 3W 17AB

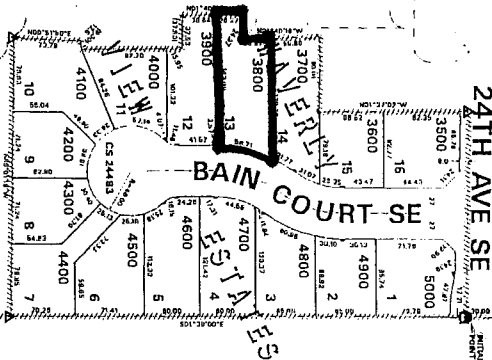
SEE MAP 11 3W 17AB

8-1



CANCELLED TAX LOT NUMBERS:  
602  
1000  
1306  
1307  
1418  
1431

SEE MAP 11 3W 16



11 3W 17AA  
ALBANY