

ORDINANCE NO. 5426

AN ORDINANCE TO LEVY AN ASSESSMENT AGAINST PROPERTY SPECIFICALLY BENEFITED BY A SEWER CONNECTION AND THE ASSESSMENT OF A SEWER AND TRANSPORTATION SYSTEM DEVELOPMENT CHARGES AT: 100 NE OPAL COURT, ALBANY; AND DECLARING AN EMERGENCY.

THE PEOPLE OF THE CITY OF ALBANY DO ORDAIN AS FOLLOWS:

Section 1: The Sewer System Development Charge as referred to in this ordinance is to provide a sewer connection to serve the structure on this property. The Transportation System Development Charge is intended to assess charges for future expansion or capacity increases to the system, expansion aimed at providing additional levels of services to the existing road network. These charges will be assessed on the property described as follows:

(See attached assessment sheets)

Section 2: The Sewer and Transportation System Development Charges and the assessments for the same will be levied according to the provisions of Albany Municipal Code, Chapter 15.16.

Section 3: The total costs of the Sewer and Transportation System Development Charges are as follows:

(See attached assessment sheets)


Section 4: The City Recorder is hereby directed to enter a statement of the assessments as above provided in the docket of the city liens and give notice thereof as provided by law.

Section 5: Inasmuch as this ordinance is necessary for the immediate preservation of the peace, health and safety of the City of Albany, Oregon, an emergency is hereby declared to exist; and this ordinance will be in full force and effect immediately upon passage by the Council and approval by the Mayor.

Passed by Council: November 10, 1999

Approved by Council President: Nov. 10, 1999

Effective Date: November 10, 1999



Council President

ATTEST:



City Recorder

SENER SYSTEM DEVELOPMENT CHARGE
10/30/99 13:08:46

Name/Address	Description	
SCOTT, A WAYNE	AIRPT CONCL PRK	11-03W-04DB-00300
SCOTT, MARLENE		WAS 11-3-4D-100, B-0830-99, LOT 2
1988 NE 19TH AVENUE	11/10/99 0863190	09222
CANBY, OR 97013	SSDC111001*	66,156.00

Report total... 66,156.00

TRANSPORTATION SYSTEM DEVELOPMENT CHARGES
10/30/99 13:08:19

Name/Address	Description	
SCOTT, A WAYNE	AIRPT CONCL PRK	11-03W-04DB-00300
SCOTT, MARLENE		WAS 11-3-40-100, B-0830-99, LOT 2
1988 NE 19TH AVENUE	11/10/99 0863190	09221
CANBY, OR 97013	STSDC11101*	53,409.85

Report total... 53,409.85

SCALE: 1" = 60'

I hereby certify this copy to be a true, full and correct copy of the original now on record in my office.
MARK NOAKES

Assessor/Tax Collector
By: *Mark Noakes*
CARTOGRAPHER

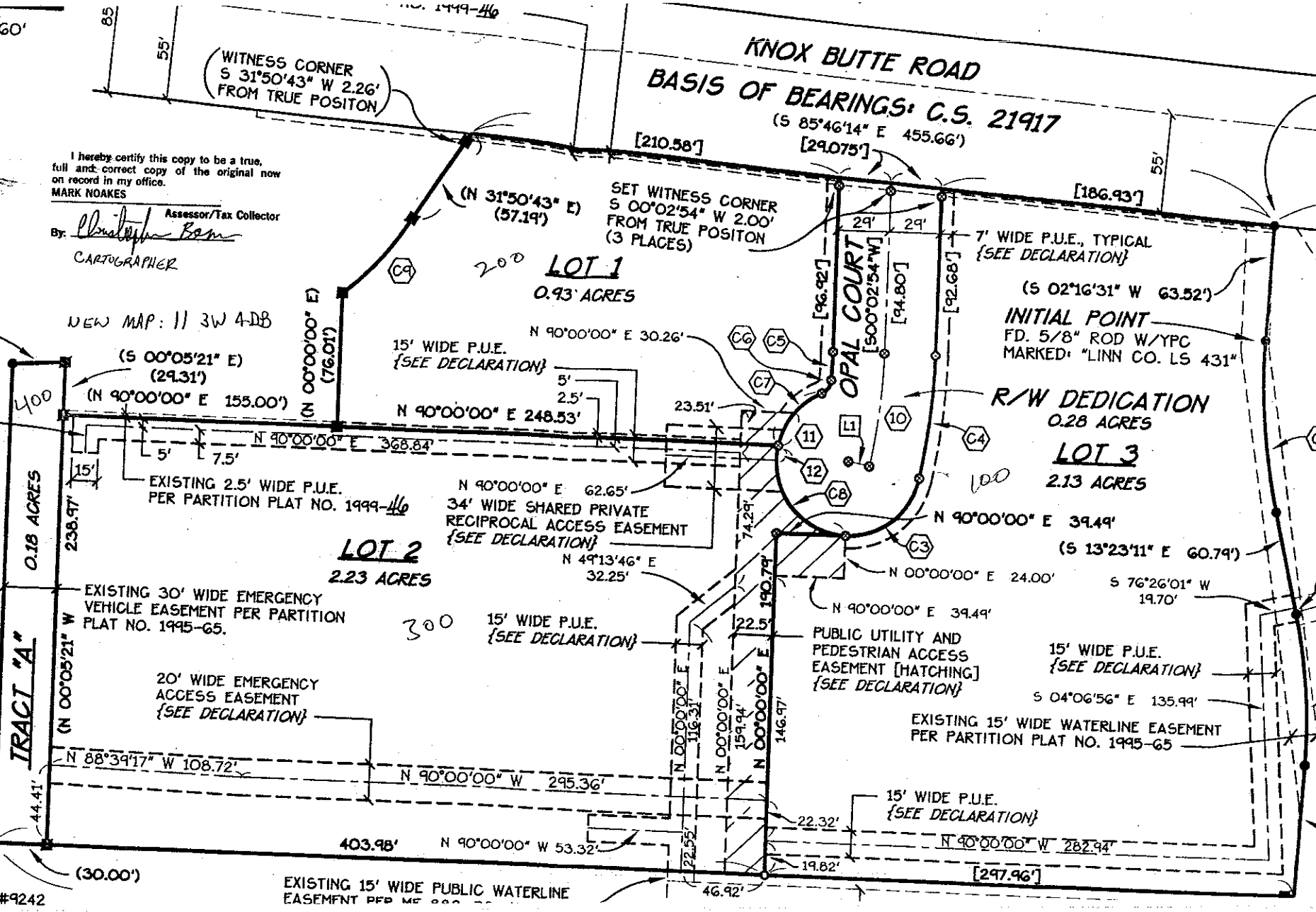
NEW MAP: 11 3W 4-DB

S 03°05' E 30.07'

S 00°00'00" W 15.08'

1. STA. #9243
3 1/4" BRASS
IN CONCRETE
SURFACE.
6600.840
35976.825
83°41'58" W
342.46'

G.P.S. STA. #9242



KNOX BUTTE ROAD
BASIS OF BEARINGS: C.S. 21917
(S 85°46'14" E 455.66')
[210.58'] [29.075'] [186.93']

(WITNESS CORNER
S 31°50'43" W 2.26'
FROM TRUE POSITION)

(N 31°50'43" E)
(57.19')
SET WITNESS CORNER
S 00°02'54" W 2.00'
FROM TRUE POSITION
(3 PLACES)

20°
LOT 1
0.93 ACRES

7' WIDE P.U.E., TYPICAL
{SEE DECLARATION}

(S 02°16'31" W 63.52')
INITIAL POINT
FD. 5/8" ROD W/YPC
MARKED: "LINN CO. LS 431"

R/W DEDICATION
0.28 ACRES
LOT 3
2.13 ACRES

(S 00°05'21" E)
(29.31')
(N 90°00'00" E 155.00')

EXISTING 2.5' WIDE P.U.E.
PER PARTITION PLAT NO. 1999-46

30°
LOT 2
2.23 ACRES

N 90°00'00" E 62.65'
34' WIDE SHARED PRIVATE
RECIPROCAL ACCESS EASEMENT
{SEE DECLARATION}

EXISTING 30' WIDE EMERGENCY
VEHICLE EASEMENT PER PARTITION
PLAT NO. 1995-65.

20' WIDE EMERGENCY
ACCESS EASEMENT
{SEE DECLARATION}

15' WIDE P.U.E.
{SEE DECLARATION}

PUBLIC UTILITY AND
PEDESTRIAN ACCESS
EASEMENT [HATCHING]
{SEE DECLARATION}

15' WIDE P.U.E.
{SEE DECLARATION}

EXISTING 15' WIDE WATERLINE EASEMENT
PER PARTITION PLAT NO. 1995-65

(N 88°39'17" W 108.72')

(N 90°00'00" W 295.36')

403.98'

(N 90°00'00" W 53.32')

EXISTING 15' WIDE PUBLIC WATERLINE
EASEMENT PER ME 800

15' WIDE P.U.E.
{SEE DECLARATION}

(N 90°00'00" W 282.94')

[297.96']