

**SHEET INDEX**

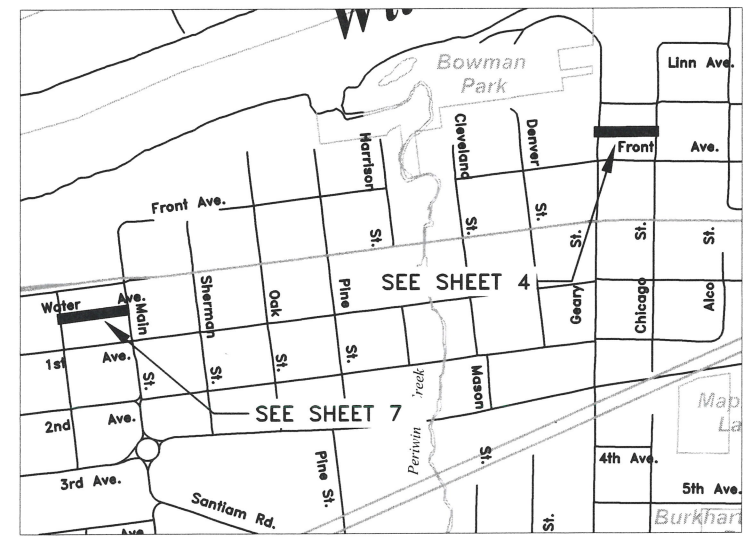
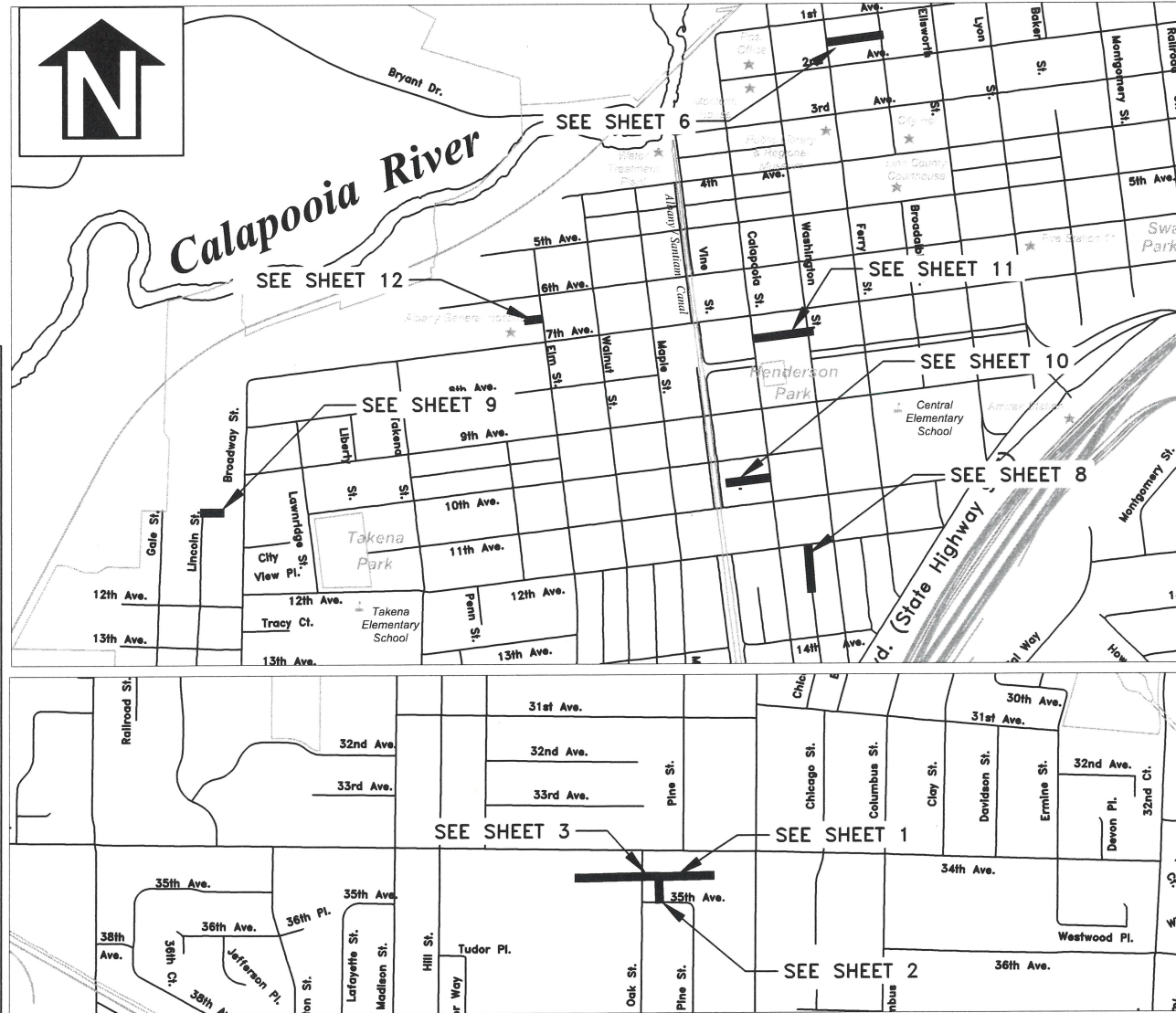
SHEET NO. 1,	COVER & NOTES
SHEET NO. 2,	PIPE ID 4832
SHEET NO. 3,	PIPE ID 4834
SHEET NO. 4,	PIPE ID 4835
SHEET NO. 5,	PIPE ID 5650
SHEET NO. 6,	PIPE ID 5772
SHEET NO. 7,	PIPE ID 5849
SHEET NO. 8,	PIPE ID 6143
SHEET NO. 9,	PIPE ID 6774
SHEET NO. 10,	PIPE ID 7176
SHEET NO. 11,	PIPE ID 7324
SHEET NO. 12,	PIPE ID 152138

# CITY OF ALBANY

## SS-24-01, 2024 PIPE BURSTING

**LEGEND**

	EXISTING SEWER MANHOLE, DEAD END OR MAINLINE CLEANOUT CONNECTED TO SEGMENT BEING REHABILITATED
	EXISTING SEWER MANHOLE, DEAD END OR MAINLINE CLEANOUT
	EXISTING SEWER MAIN
	EXISTING SEWER LATERAL
	EXISTING PRIVATE CLEANOUT
	NEW PRIVATE CLEANOUT
	NEW PROPERTY LINE CLEANOUT
	PIPE BURST SEWER MAINLINE
	OPEN TRENCH SEWER MAINLINE
	PIPE BURST PRIVATE SEWER LATERAL
	OPEN TRENCH PRIVATE SEWER LATERAL
	DIRECTIONALLY BORE PRIVATE SEWER LATERAL
	SEWER LATERAL CONNECTION TO BE ABANDONED



**GENERAL NOTES**

- ALL CONSTRUCTION SHALL CONFORM TO THE CITY OF ALBANY STANDARD CONSTRUCTION SPECIFICATIONS AND ASSOCIATED STANDARD DRAWINGS. THE CURRENT VERSION OF THE CITY OF ALBANY STANDARD CONSTRUCTION SPECIFICATIONS CAN BE FOUND ON THE CITY'S WEBSITE AT [WWW.CITYOFALBANY.NET](http://WWW.CITYOFALBANY.NET).
- UTILITIES SHOWN ARE FOR REFERENCE ONLY. FOR A FIELD LOCATE, CALL THE UTILITIES NOTIFICATIONS CENTER AT 1-800-332-2344.
- OPERATING ACCESS FOR CITY MAINTENANCE PERSONNEL TO EXISTING AND NEW WATER VALVES AND MANHOLES SHALL BE CONTINUOUSLY MAINTAINED BY THE CONTRACTOR DURING ALL CONSTRUCTION ACTIVITIES.
- CONTRACTOR SHALL VERIFY ALL EXISTING PIPE ELEVATIONS, PIPE DIAMETERS, AND PIPE MATERIALS AT CONNECTION AND ABANDONMENT LOCATIONS PRIOR TO CONSTRUCTION. ANY DISCREPANCIES SHALL BE REPORTED TO ENGINEER PRIOR TO BEGINNING WORK.
- ATTENTION: OREGON LAW REQUIRES YOU TO FOLLOW RULES ADOPTED BY THE OREGON UTILITY NOTIFICATION CENTER. THOSE RULES ARE SET FORTH IN OAR 952-001-0010 THROUGH OAR 952-001-0090. YOU MAY OBTAIN COPIES OF THE RULES BY CALLING THE CENTER. (NOTE: THE TELEPHONE NUMBER FOR THE OREGON UTILITY NOTIFICATION CENTER IS (503) 232-1987).
- CONTRACTOR SHALL BE RESPONSIBLE FOR PROPER INSTALLATION AND MAINTENANCE OF ALL EROSION PREVENTION SEDIMENT CONTROL (EPSC) MEASURES IN ACCORDANCE WITH LOCAL, STATE, AND FEDERAL REGULATIONS UNTIL ALL CONSTRUCTION IS COMPLETED AND APPROVED BY THE CITY OF ALBANY, AND VEGETATION/LANDSCAPING IS ESTABLISHED. FOR GUIDANCE, REFER TO THE CITY OF ALBANY EPSC MANUAL WHICH CAN BE FOUND AT [WWW.CITYOFALBANY.NET](http://WWW.CITYOFALBANY.NET).
- CONTRACTOR SHALL VERIFY AND EXPOSE ALL PRIVATE LATERAL CONNECTIONS AT THE MAIN PRIOR TO CONSTRUCTION. ANY DISCREPANCIES REGARDING PIPE DIAMETER AND MATERIAL SHALL BE REPORTED TO THE ENGINEER PRIOR TO BEGINNING MAINLINE CONSTRUCTION.
- PIPE AND MATERIALS INSTALLED ON PRIVATE PROPERTY SHALL BE IN ACCORDANCE WITH THE CURRENT OREGON PLUMBING SPECIALTY CODE.
- CONTRACTOR SHALL VERIFY THE CITY HAS OBTAINED PLUMBING PERMITS FOR EACH PROPERTY PRIOR TO CONSTRUCTING IMPROVEMENTS ON PRIVATE PROPERTY.
- ALL PRIVATE SERVICE LATERALS SHOWN TO BE REPLACED SHALL BE PIPE BURST UNLESS OTHERWISE NOTED ON THE PLANS OR AS SPECIFIED BY THE ENGINEER.
- ALL SEWER MAINS SHALL BE REHABILITATED USING PIPE BURSTING UNLESS OTHERWISE NOTED ON THE PLANS OR AS SPECIFIED BY THE ENGINEER. SEE SPECIAL PROVISIONS.

DESIGNED: A. MONACO	REVISIONS
DRAWN: A. MONACO	NO: ---
CHECKED: C. CERKLEWSKI	BY: ---
DATE: 12/23/2024	DATE: ---

**PUBLIC WORKS DEPARTMENT**  
**ENGINEERING SERVICES**

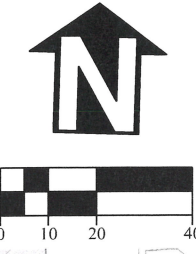
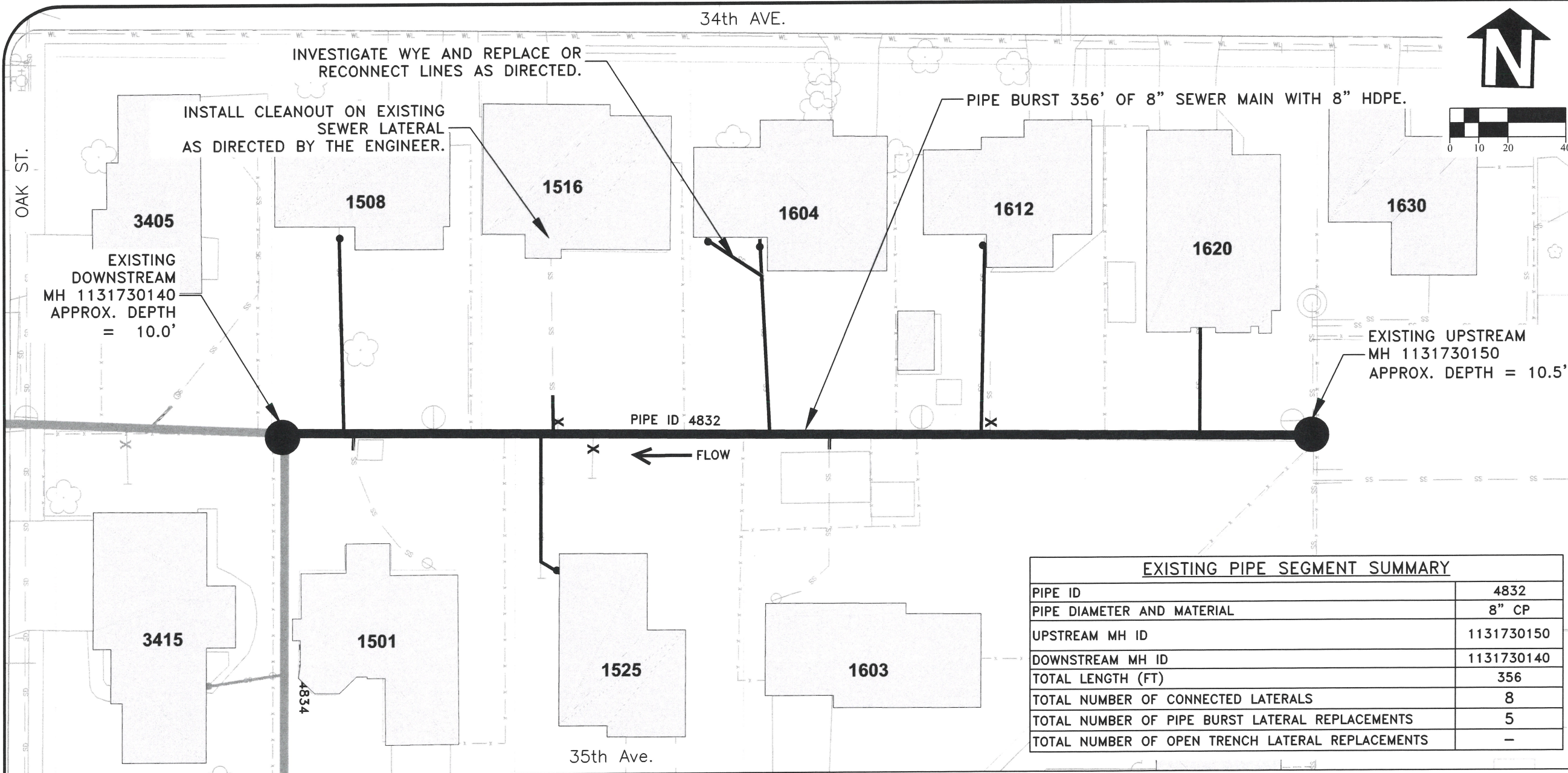
**SS-24-01, 2024 PIPE BURSTING**

EXPIRATION DATE: 12/31/2025

SHEET NO. 1 OF 12

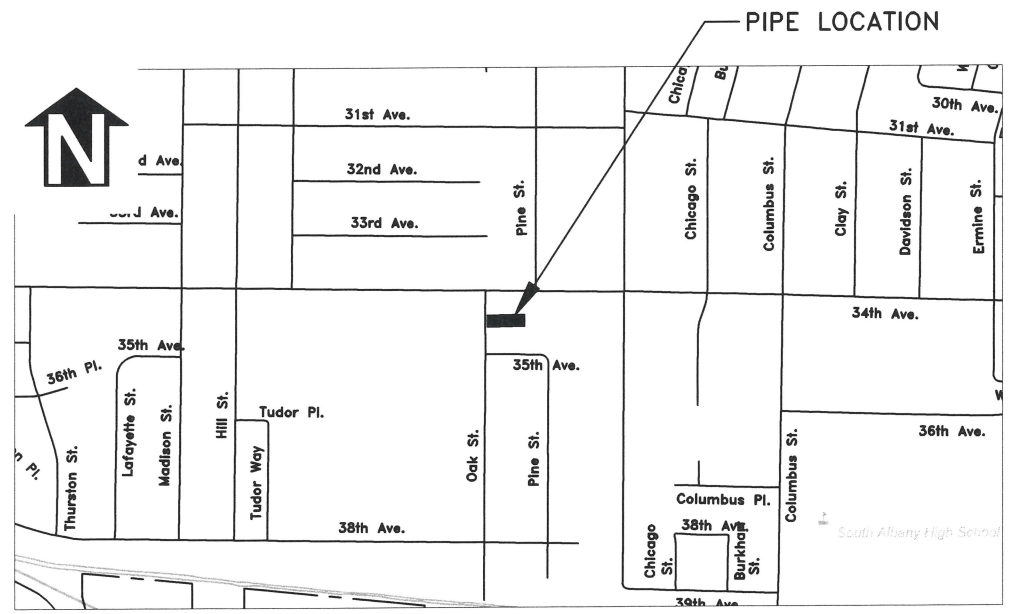
PROJECT NO: SS-24-01

FILE: COVER.DWG




EXISTING PIPE SEGMENT SUMMARY	
PIPE ID	4832
PIPE DIAMETER AND MATERIAL	8" CP
UPSTREAM MH ID	1131730150
DOWNSTREAM MH ID	1131730140
TOTAL LENGTH (FT)	356
TOTAL NUMBER OF CONNECTED LATERALS	8
TOTAL NUMBER OF PIPE BURST LATERAL REPLACEMENTS	5
TOTAL NUMBER OF OPEN TRENCH LATERAL REPLACEMENTS	-

LATERAL SUMMARY STARTING FROM DOWNSTREAM MH 1131730140			
FOOTAGE	ACTION	PROPERTY SERVED	PRIVATE SEWER LATERAL CONSTRUCTION NOTES
22'L	RECONNECT	1508 34TH AVE	PIPE BURST 4" CLAY WITH 4" HDPE
26'R	RECONNECT	1501 35TH AVE	RECONNECT 4" PVC
90'R	RECONNECT	1525 35TH AVE	PIPE BURST 4" CLAY WITH 4" HDPE
93'L	RECONNECT	1516 34TH AVE	RECONNECT 4" PVC
95'L	ABANDON		-
107'R	ABANDON		-
168'L	RECONNECT	1604 34TH AVE	PIPE BURST 4" CLAY WITH 4" HDPE
190'R	RECONNECT	1603 35TH AVE	RECONNECT 4" PVC
241'L	RECONNECT	1612 34TH AVE	PIPE BURST 4" CLAY WITH 4" HDPE
244'L	ABANDON		-
318'L	RECONNECT	1620 34TH AVE	PIPE BURST 4" CLAY WITH 4" HDPE



DESIGNED: A. MONACO	REVISIONS
DRAWN: A. MONACO	NO: -
CHECKED: C. CERKLEWSKI	BY: -
DATE: 12/23/2024	DATE: -

**PUBLIC WORKS DEPARTMENT**  
**ENGINEERING SERVICES**



**SS-24-01, 2024 PIPE BURSTING**  
**PIPE ID 4832**

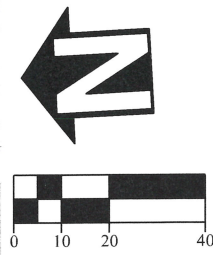
REGISTERED PROFESSIONAL  
ENGINEER  
56,471PE  
*Christopher L. Cerkowski*  
OREGON  
JULY 9, 2002  
CHRISTOPHER L. CERKLEWSKI

EXPIRATION DATE: 12/31/2025

SHEET NO. 2 OF 12

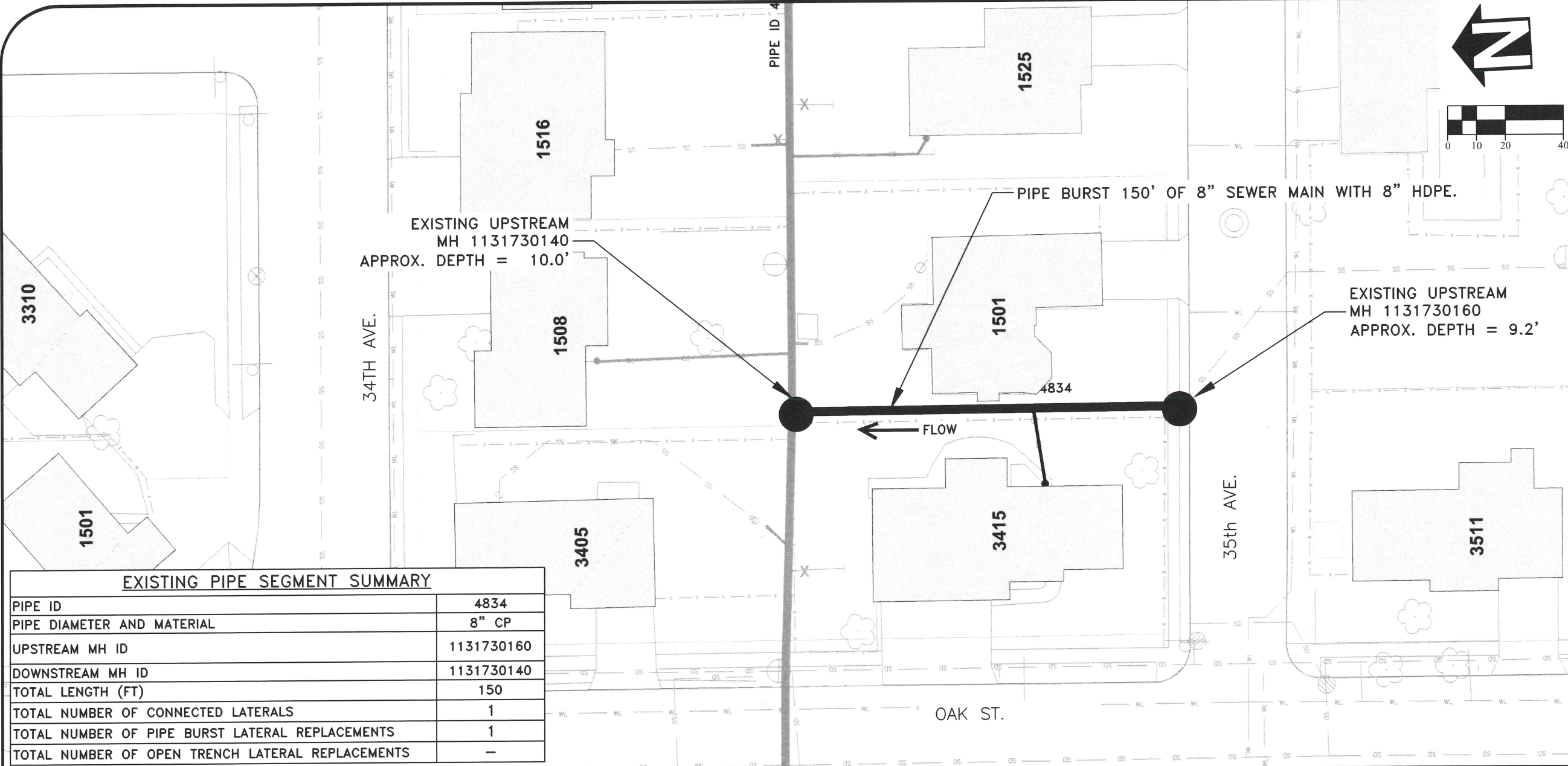
PROJECT NO: SS-24-01

FILE: BASE.DWG

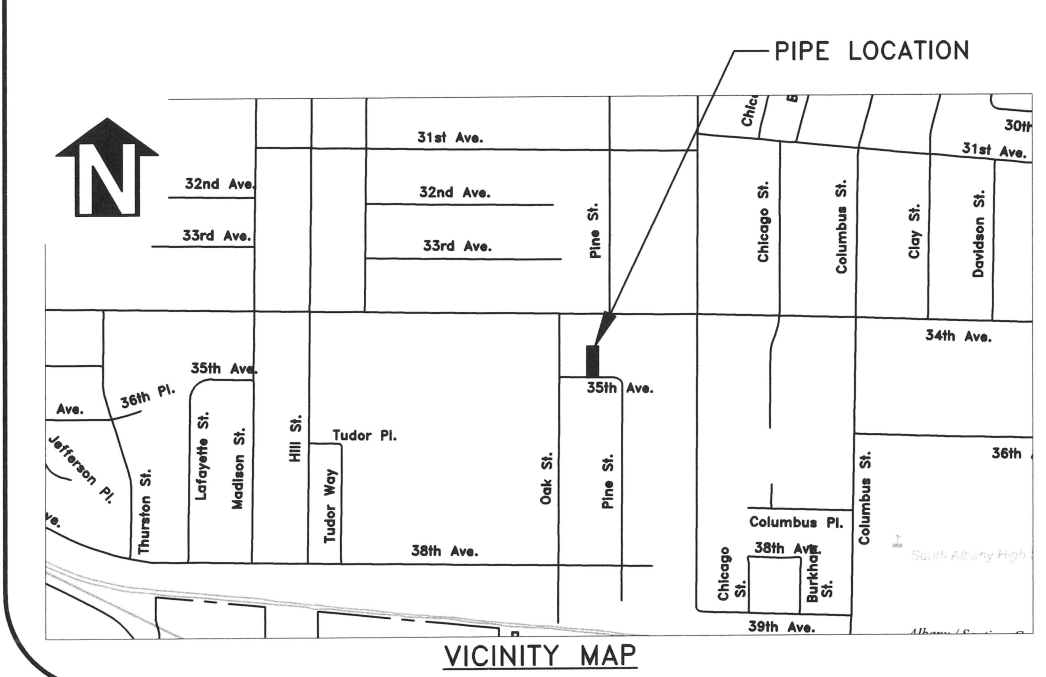


DESIGNED: A. MONACO  
 DRAWN: A. MONACO  
 CHECKED: C. CERKLEWSKI  
 DATE: 12/23/2024

REVISIONS	
NO.	BY:



EXISTING PIPE SEGMENT SUMMARY	
PIPE ID	4834
PIPE DIAMETER AND MATERIAL	8" CP
UPSTREAM MH ID	1131730160
DOWNSTREAM MH ID	1131730140
TOTAL LENGTH (FT)	150
TOTAL NUMBER OF CONNECTED LATERALS	1
TOTAL NUMBER OF PIPE BURST LATERAL REPLACEMENTS	1
TOTAL NUMBER OF OPEN TRENCH LATERAL REPLACEMENTS	-



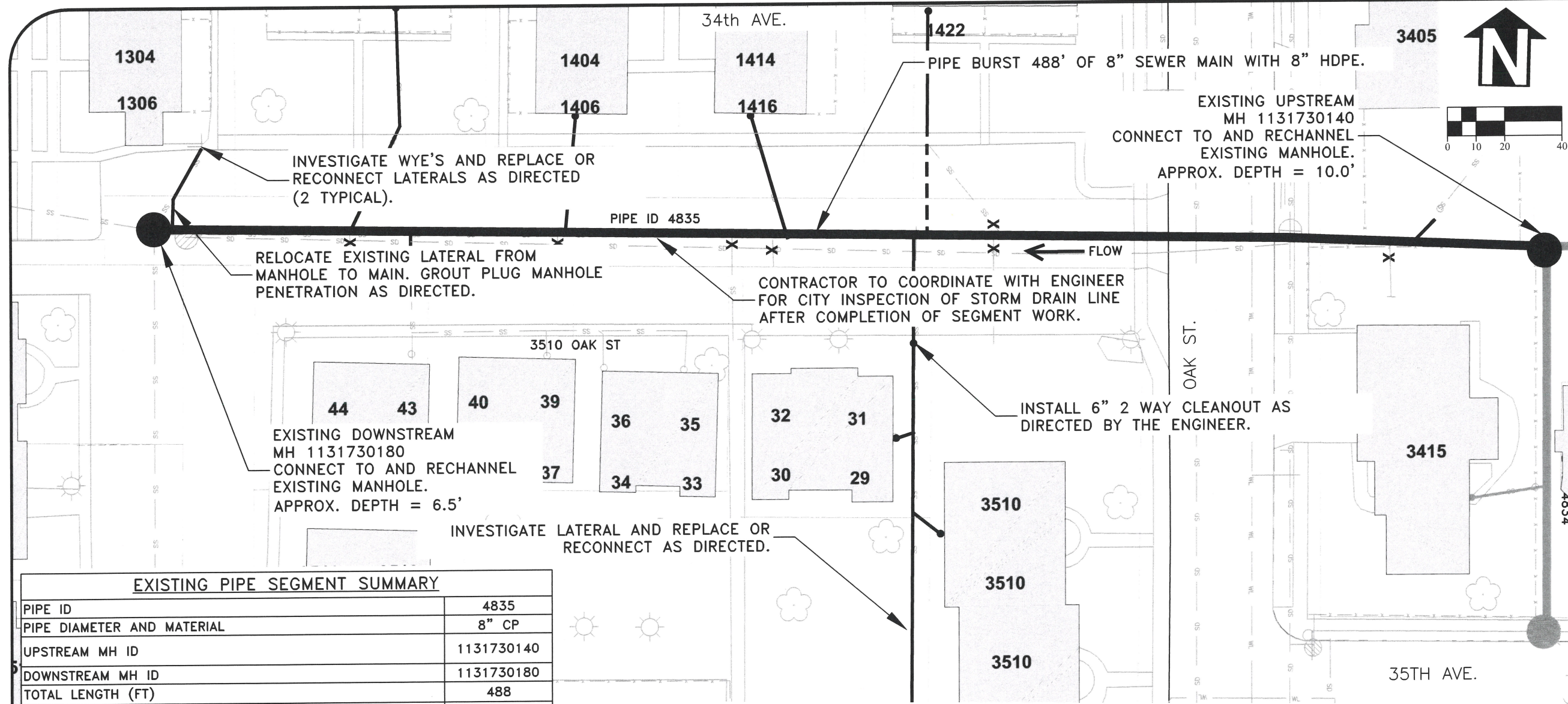
LATERAL SUMMARY STARTING FROM UPSTREAM MH 1131730160			
FOOTAGE	ACTION	PROPERTY SERVED	PRIVATE SEWER LATERAL CONSTRUCTION NOTES
50'L	RECONNECT	3415 OAK ST	PIPE BURST 4" CONCRETE LATERAL WITH 4" HDPE



EXPIRATION DATE: 12/31/2025  
 SHEET NO. 3 OF 12  
 PROJECT NO: SS-24-01  
 FILE: BASE.DWG

PUBLIC WORKS DEPARTMENT  
 ENGINEERING SERVICES

SS-24-01, 2024 PIPE BURSTING  
 PIPE ID 4834



DESIGNED: A. MONACO	REVISIONS
DRAWN: A. MONACO	NO: ---
CHECKED: C. CERKLEWSKI	BY: ---
DATE: 12/23/2024	DATE: ---

**PUBLIC WORKS DEPARTMENT**  
**ENGINEERING SERVICES**

**SS-24-01, 2024 PIPE BURSTING**  
**PIPE ID 4835**



EXPIRATION DATE: 12/31/2025

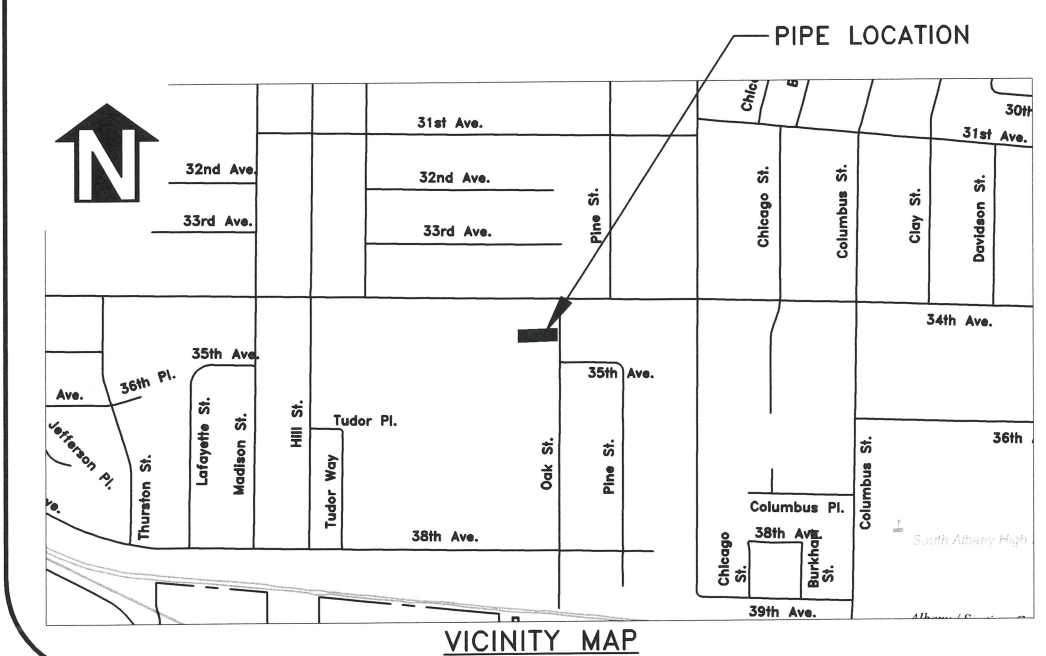
SHEET NO. 4 OF 12

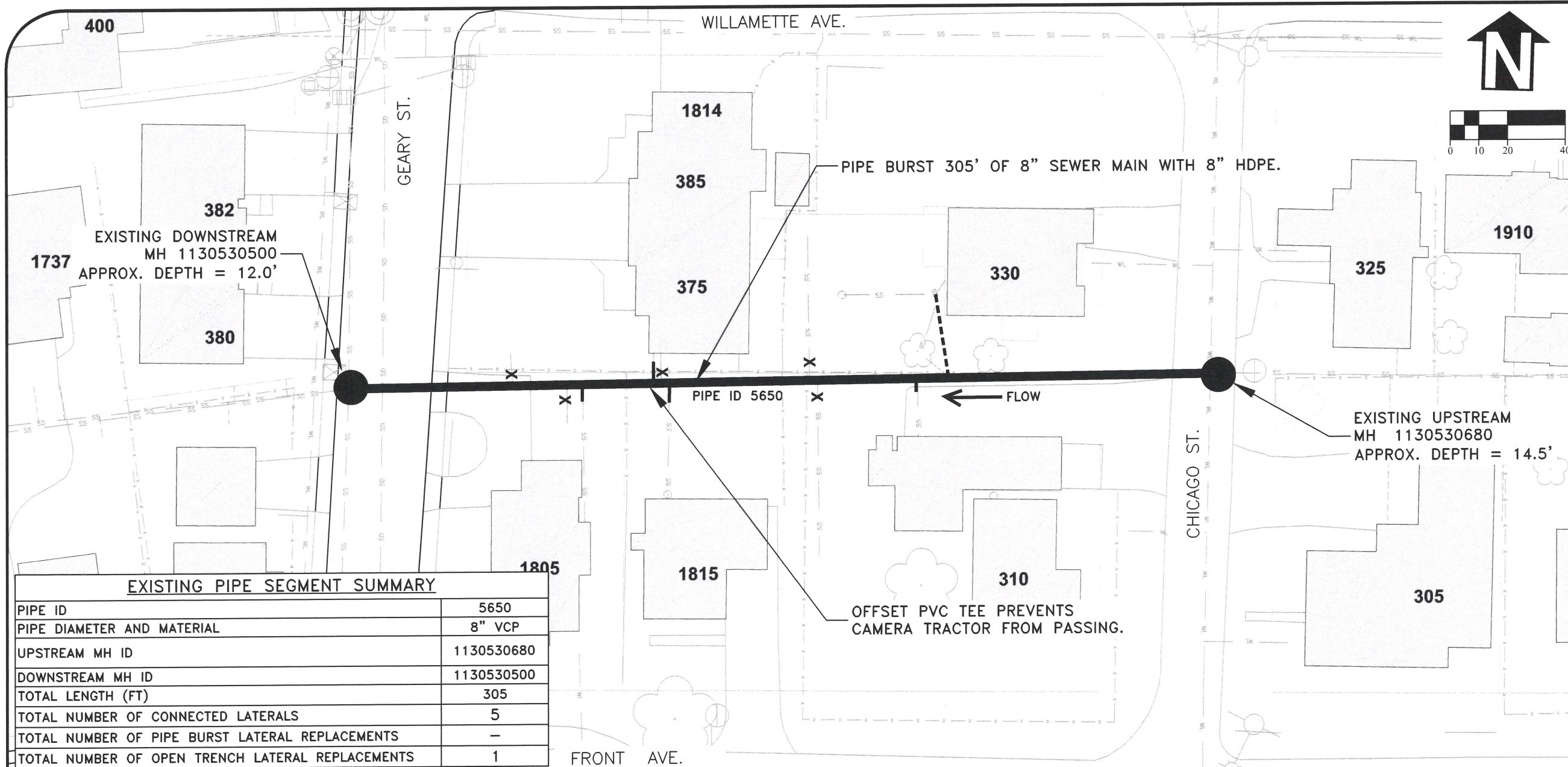
PROJECT NO: SS-24-01

FILE: BASE.DWG

PIPE ID	4835
PIPE DIAMETER AND MATERIAL	8" CP
UPSTREAM MH ID	1131730140
DOWNSTREAM MH ID	1131730180
TOTAL LENGTH (FT)	488
TOTAL NUMBER OF CONNECTED LATERALS	8
TOTAL NUMBER OF PIPE BURST LATERAL REPLACEMENTS	7
TOTAL NUMBER OF OPEN TRENCH LATERAL REPLACEMENTS	1

FOOTAGE	ACTION	PROPERTY SERVED	PRIVATE SEWER LATERAL CONSTRUCTION NOTES
5'L	RECONNECT	1300-1306 34TH	PIPE BURST 6" CP LATERAL WITH 6" HDPE AS DIRECTED
70'R	ABANDON		-
72'L	RECONNECT	1400-1406 34TH	PIPE BURST 4" CONCRETE WITH 4" HDPE
93'R	RECONNECT	UNIT 33-44	RECONNECT 4" CAST IRON
142'R	ABANDON		-
145'L	RECONNECT	1400-1406 34TH	PIPE BURST 4" CONCRETE WITH 4" HDPE
202'R	ABANDON		-
218'R	ABANDON		-
220'L	RECONNECT	1410-1416 34TH	PIPE BURST 4" CONCRETE WITH 4" HDPE
269'R	RECONNECT	#29-31, 18-28	PIPE BURST 6" CONCRETE WITH 6" HDPE
270'L	CONNECT	1420-1426 34TH	OPEN TRENCH REROUTE AND PIPE BURST 4" CONCRETE WITH 4" HDPE
294'R	ABANDON		-
296'R	ABANDON		-
297'L	ABANDON	1420-1426 34TH	PIPE BURST 4" CONCRETE WITH 4" HDPE
434'R	ABANDON		-
441'L	RECONNECT	3405 OAK ST.	RECONNECT 4" PVC






DESIGNED: A. MONACO	REVISIONS
DRAWN: A. MONACO	NO: --
CHECKED: C. CERKLEWSKI	BY: --
DATE: 12/23/2024	DATE: --

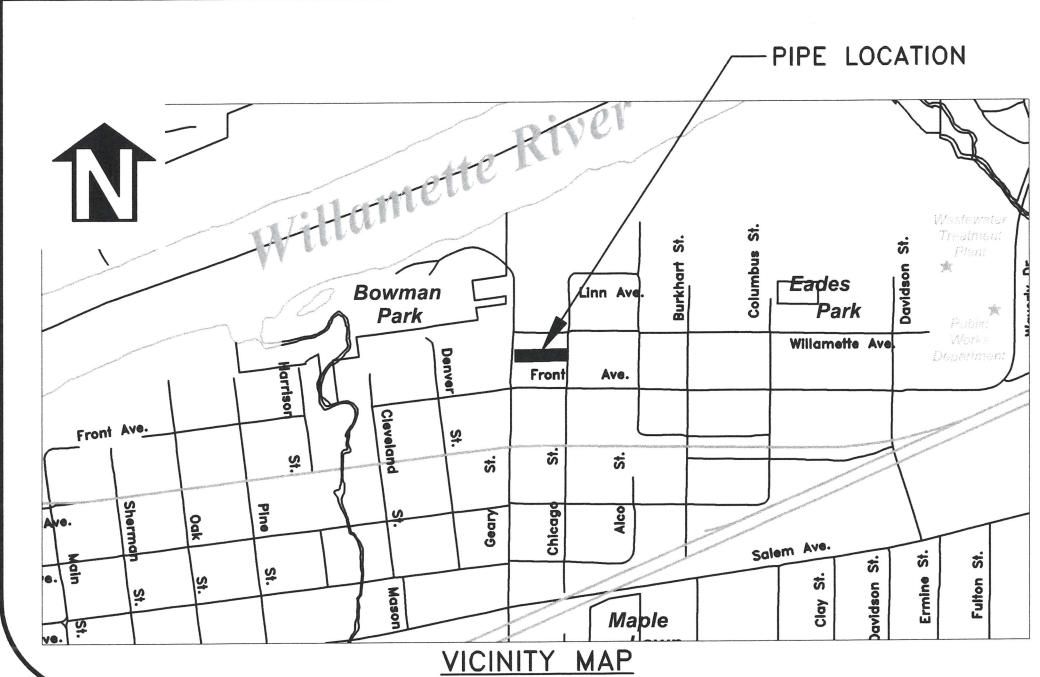
**PUBLIC WORKS DEPARTMENT**  
**ENGINEERING SERVICES**

**SS-24-01, 2024 PIPE BURSTING**  
**PIPE ID 5650**



EXISTING PIPE SEGMENT SUMMARY	
PIPE ID	5650
PIPE DIAMETER AND MATERIAL	8" VCP
UPSTREAM MH ID	1130530680
DOWNSTREAM MH ID	1130530500
TOTAL LENGTH (FT)	305
TOTAL NUMBER OF CONNECTED LATERALS	5
TOTAL NUMBER OF PIPE BURST LATERAL REPLACEMENTS	-
TOTAL NUMBER OF OPEN TRENCH LATERAL REPLACEMENTS	1

LATERAL SUMMARY STARTING FROM DOWNSTREAM MH 1130530500			
FOOTAGE	ACTION	PROPERTY SERVED	PRIVATE SEWER LATERAL CONSTRUCTION NOTES
60'L	ABANDON		-
78'R	ABANDON		-
81'R	RECONNECT	1805 FRONT	RECONNECT 4" HDPE
104'L	RECONNECT	375 GEARY	RECONNECT 4" PVC
109'L	ABANDON		-
110'R	RECONNECT	1815 FRONT	RECONNECT 4" HDPE
158'L	ABANDON		-
160'R	ABANDON		-
196'R	RECONNECT	310 CHICAGO	RECONNECT 4" CAST LATERAL
207'L	RECONNECT	330 CHICAGO	OPEN TRENCH 4" LATERAL



REGISTERED PROFESSIONAL  
ENGINEER  
56,471PE  
*Christopher L. Cerkowski*  
OREGON  
JULY 9, 2002  
CHRISTOPHER L. CERKLEWSKI

EXPIRATION DATE: 12/31/2025

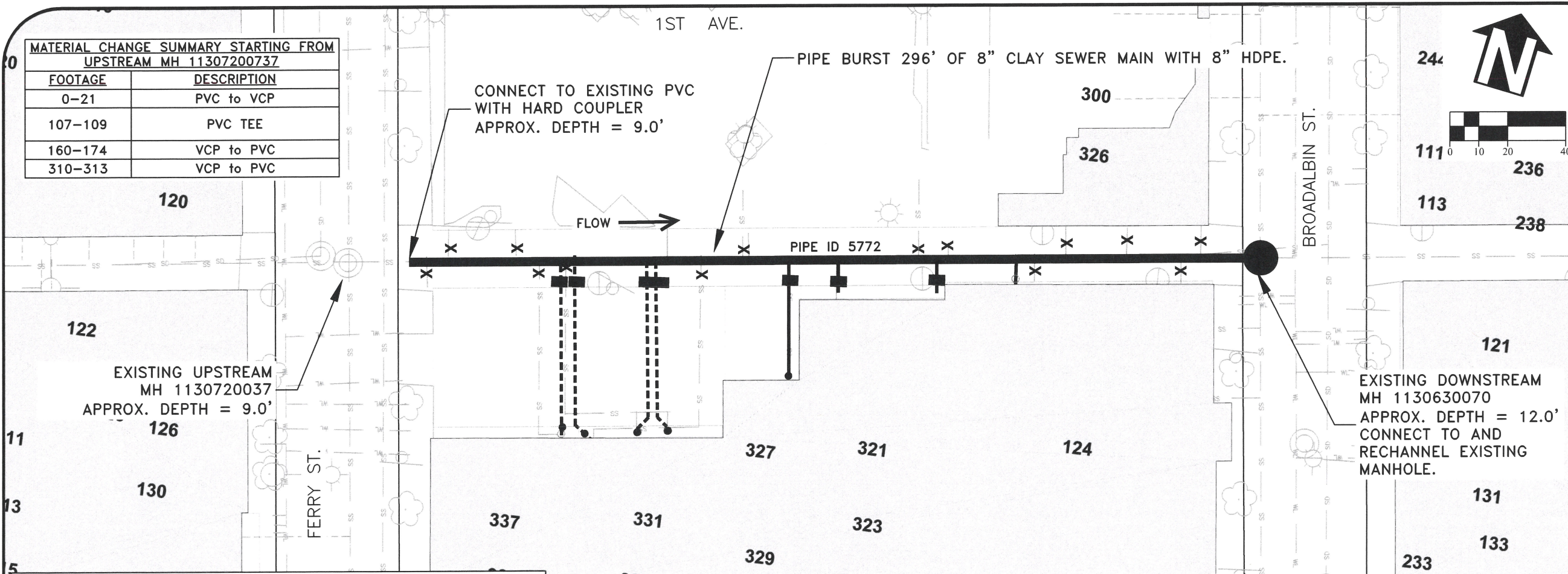
SHEET NO. 5 OF 12

PROJECT NO: SS-24-01

FILE: BASE.DWG

**MATERIAL CHANGE SUMMARY STARTING FROM UPSTREAM MH 11307200737**

FOOTAGE	DESCRIPTION
0-21	PVC to VCP
107-109	PVC TEE
160-174	VCP to PVC
310-313	VCP to PVC



EXISTING UPSTREAM MH 1130720037  
APPROX. DEPTH = 9.0'

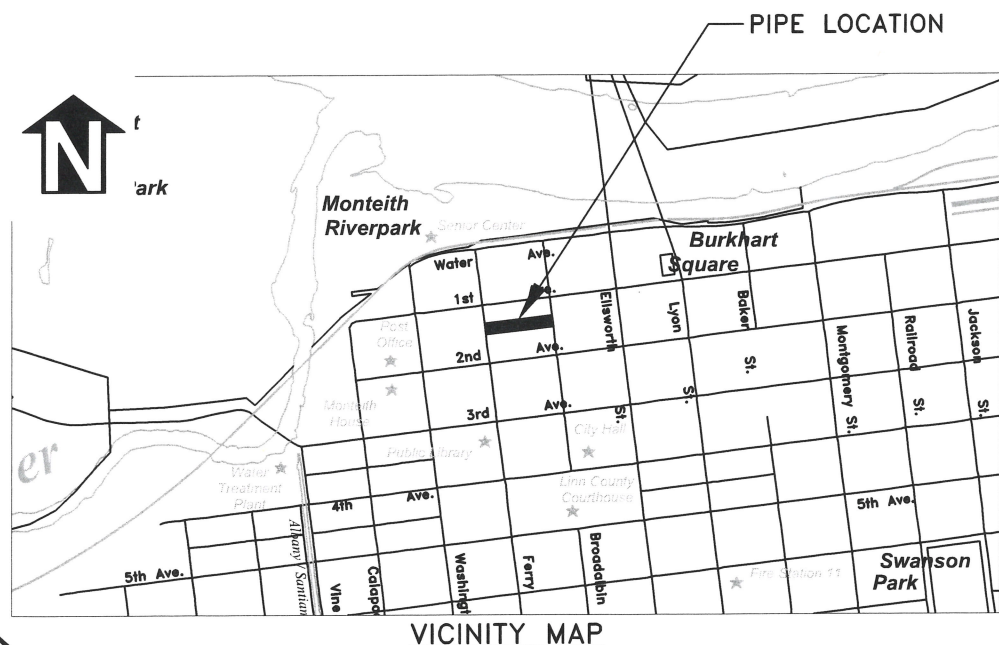
EXISTING DOWNSTREAM MH 1130630070  
APPROX. DEPTH = 12.0'  
CONNECT TO AND RECHANNEL EXISTING MANHOLE.

**EXISTING PIPE SEGMENT SUMMARY**

PIPE ID	5772
PIPE DIAMETER AND MATERIAL	8" VCP
UPSTREAM MH ID	1130720037
DOWNSTREAM MH ID	1130630070
TOTAL LENGTH (FT)	296
TOTAL NUMBER OF CONNECTED LATERALS	8
TOTAL NUMBER OF PIPE BURST LATERAL REPLACEMENTS	1
TOTAL NUMBER OF OPEN TRENCH LATERAL REPLACEMENTS	4

**LATERAL SUMMARY STARTING FROM DOWNSTREAM MH 1130720170**

FOOTAGE	ACTION	PROPERTY SERVED	PRIVATE SEWER LATERAL CONSTRUCTION NOTES
20'	ABANDON		-
27'L	ABANDON		-
43'R	ABANDON		-
59'R	ABANDON		-
73'L	ABANDON		-
80'L	RECONNECT	124 BROADALBIN ST SW	RECONNECT 6" PVC SEWER LATERAL
98'R	ABANDON		-
108'	RECONNECT	321 2ND AVE SW	RECONNECT 4" PVC LATERAL
114'R	ABANDON		-
146'L	RECONNECT	323 2ND AVE SW	RECONNECT 4" CLAY LATERAL
165'	RECONNECT	327 2ND AVE SW	PIPE BURST 4" CLAY LATERAL WITH 4" HDPE.
179'	ABANDON		-
193'L	ABANDON		-
208'L	CONNECT	331 2ND AVE SW	OPEN TRENCH 4" LATERAL
210'L	CONNECT	335 2ND AVE SW	OPEN TRENCH 4" LATERAL
238'	CONNECT	335 2ND AVE SW	OPEN TRENCH 4" LATERAL
241'	ABANDON		-
242'	CONNECT	337 2ND AVE SW	OPEN TRENCH 4" LATERAL
249'	ABANDON		-
256'R	ABANDON		-
280'R	ABANDON		-
288'	ABANDON		-



**PUBLIC WORKS DEPARTMENT  
ENGINEERING SERVICES**



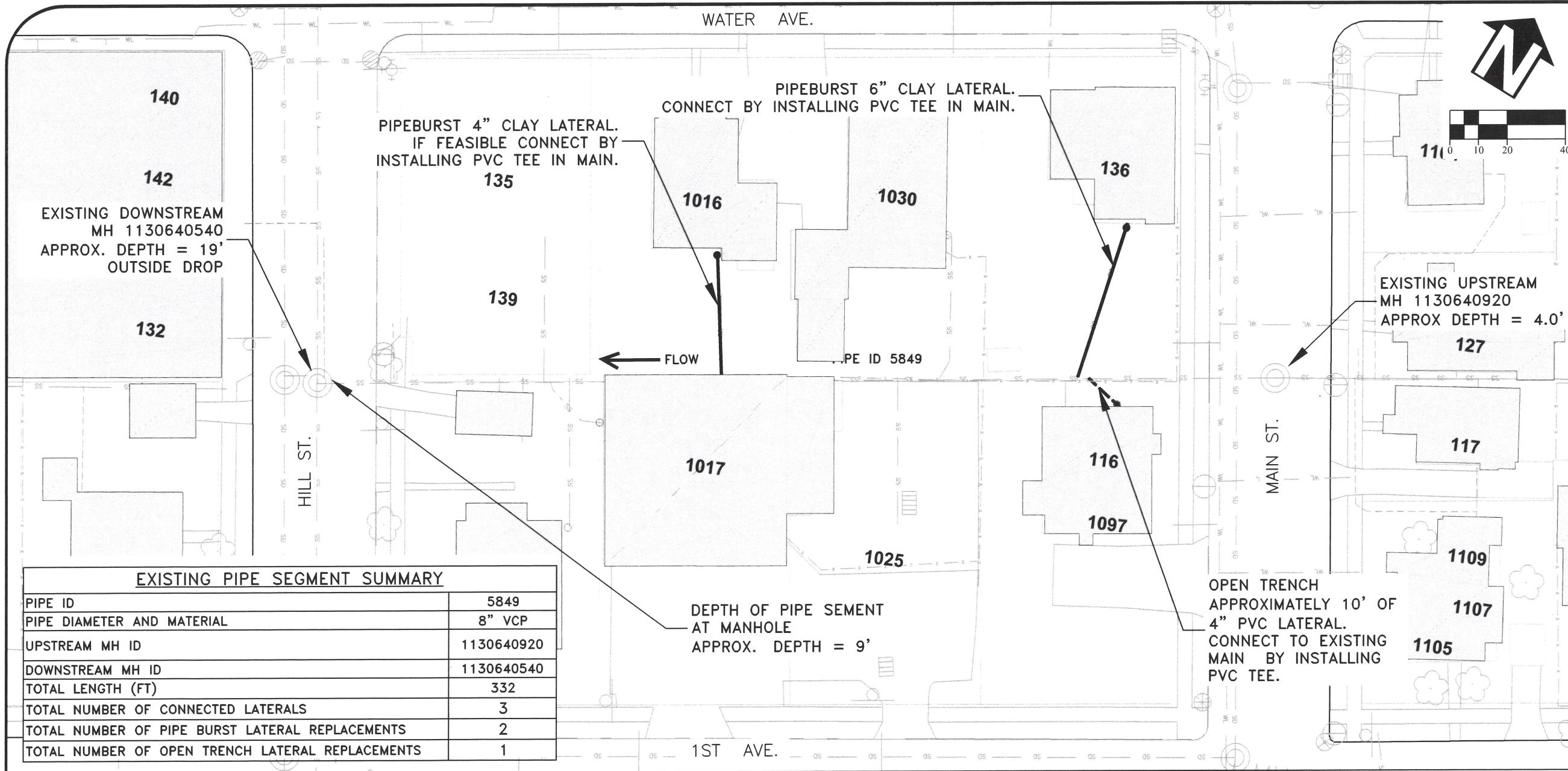
**SS-24-01, 2024 PIPE BURSTING  
PIPE ID 5772**



EXPIRATION DATE: 12/31/2025  
SHEET NO. 6 OF 12  
PROJECT NO: SS-24-01  
FILE: BASE.DWG

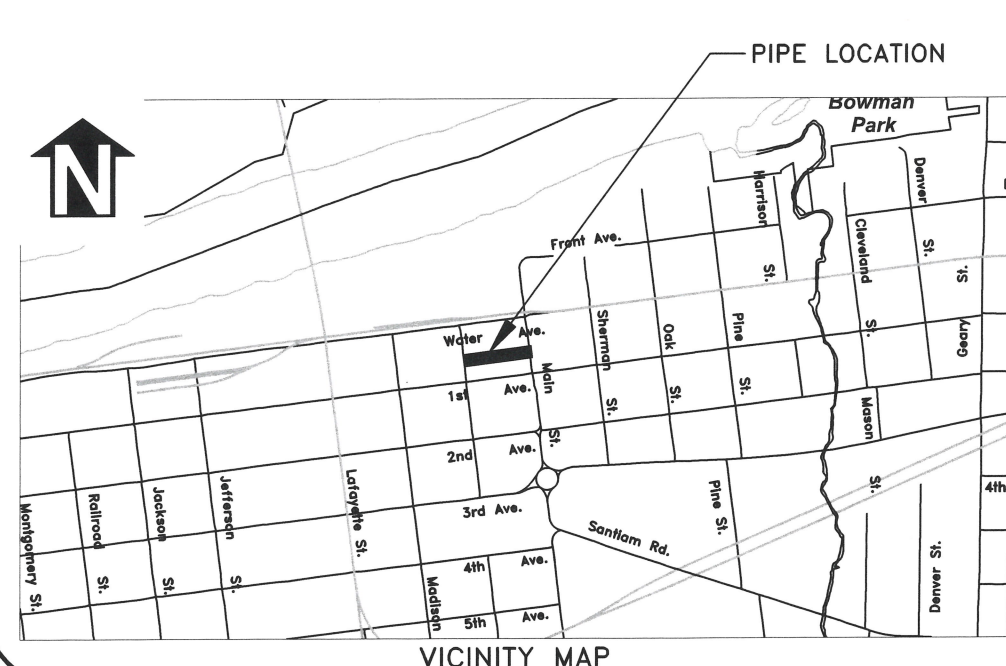
DESIGNED: A. MONACO  
DRAWN: A. MONACO  
CHECKED: C. CERKLEWSKI  
DATE: 12/23/2024

REVISIONS	NO.	DATE	BY
	1		
	2		
	3		
	4		



DESIGNED: A. MONACO	REVISIONS
DRAWN: A. MONACO	NO: ---
CHECKED: C. CERKLEWSKI	BY: ---
DATE: 12/23/2024	DATE: ---


EXISTING PIPE SEGMENT SUMMARY	
PIPE ID	5849
PIPE DIAMETER AND MATERIAL	8" VCP
UPSTREAM MH ID	1130640920
DOWNSTREAM MH ID	1130640540
TOTAL LENGTH (FT)	332
TOTAL NUMBER OF CONNECTED LATERALS	3
TOTAL NUMBER OF PIPE BURST LATERAL REPLACEMENTS	2
TOTAL NUMBER OF OPEN TRENCH LATERAL REPLACEMENTS	1



LATERAL SUMMARY STARTING FROM UPSTREAM MH 1130640920			
FOOTAGE	ACTION	PROPERTY SERVED	PRIVATE SEWER LATERAL CONSTRUCTION NOTES
65'L	RECONNECT	116 MAIN ST NE	OPEN TRENCH 4" LATERAL AS DIRECTED
67'R	RECONNECT	136 MAIN ST NE	PIPE BURST 6" CLAY LATERAL WITH 6" HDPE
193'	RECONNECT	1016 WATER AVE NE	PIPE BURST 4" CLAY LATERAL WITH 4" HDPE

NOTE:  
SEWER MAIN TO BE REHABILITATED BY OTHERS.

**PUBLIC WORKS DEPARTMENT**  
**ENGINEERING SERVICES**



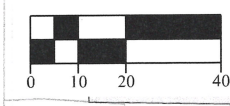
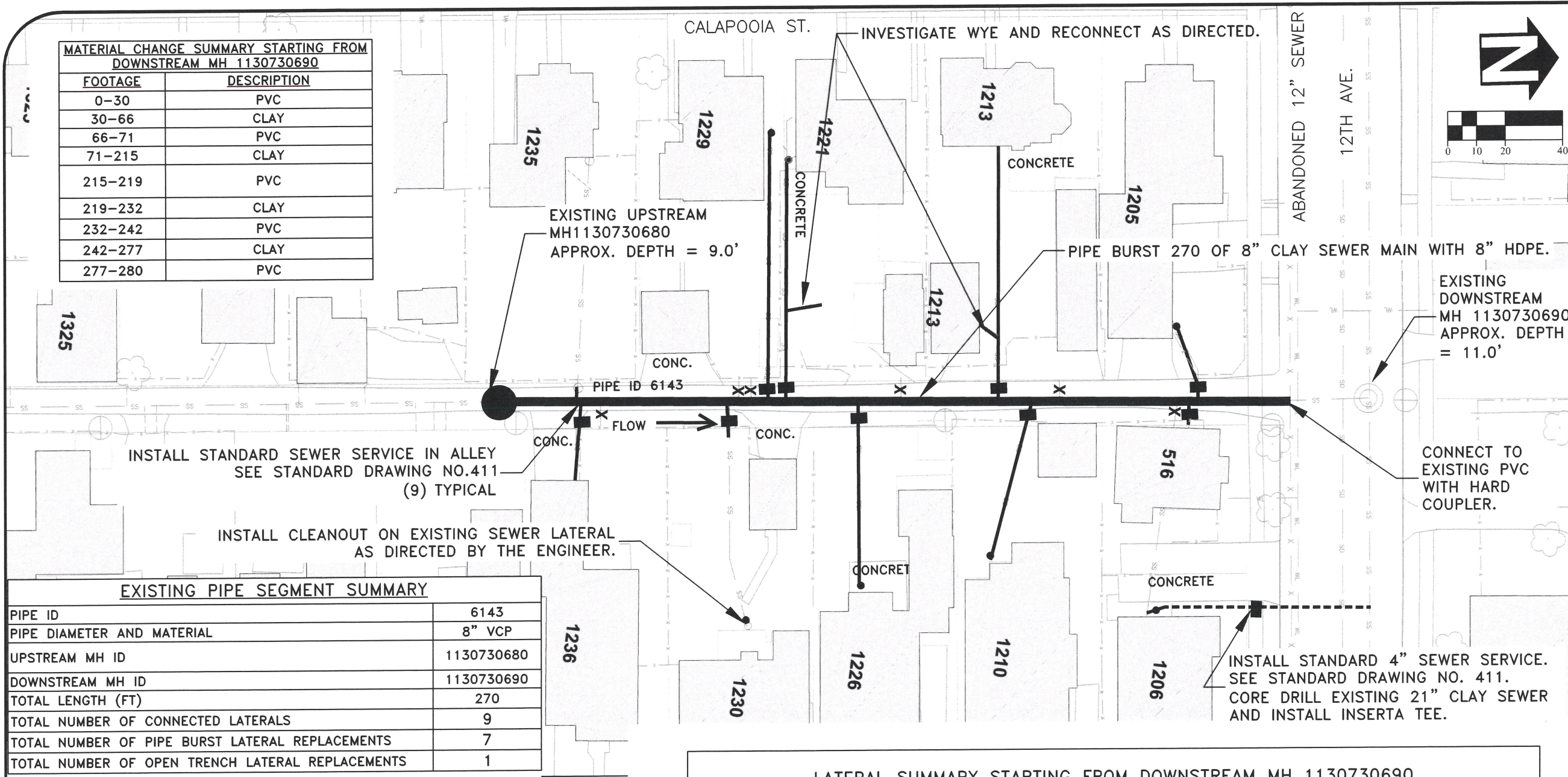
**SS-24-01, 2024 PIPE BURSTING**  
**PIPE ID 5849**

REGISTERED PROFESSIONAL  
ENGINEER  
56,471PE  
*Christopher L. Cerkowski*  
OREGON  
JULY 9, 2002

EXPIRATION DATE: 12/31/2025  
SHEET NO. 7 OF 12  
PROJECT NO: SS-24-01  
FILE: BASE.DWG

**MATERIAL CHANGE SUMMARY STARTING FROM  
DOWNSTREAM MH 1130730690**

FOOTAGE	DESCRIPTION
0-30	PVC
30-66	CLAY
66-71	PVC
71-215	CLAY
215-219	PVC
219-232	CLAY
232-242	PVC
242-277	CLAY
277-280	PVC



INSTALL STANDARD SEWER SERVICE IN ALLEY  
SEE STANDARD DRAWING NO.411  
(9) TYPICAL

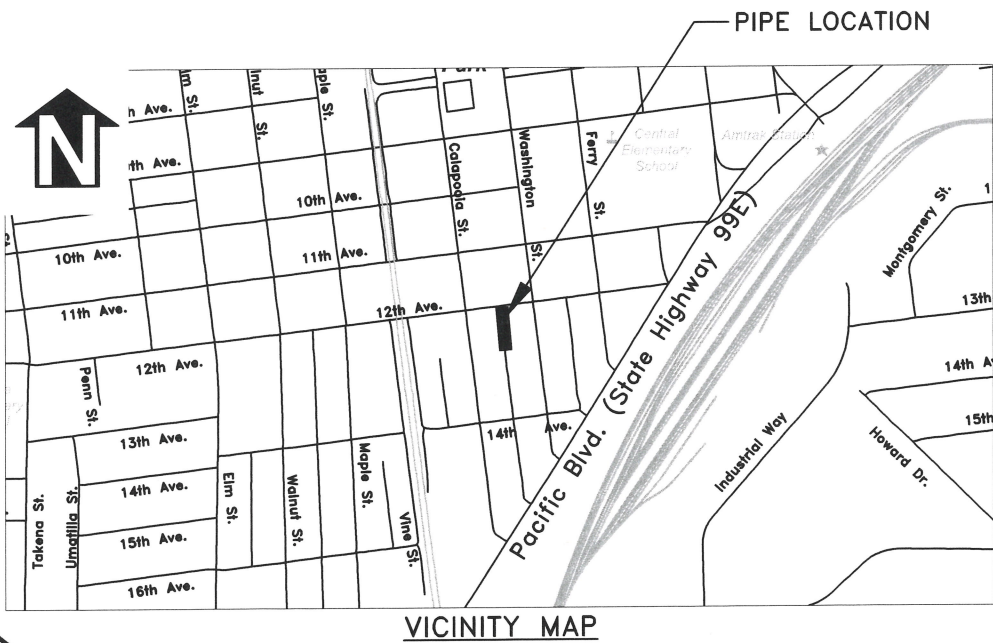
INSTALL CLEANOUT ON EXISTING SEWER LATERAL  
AS DIRECTED BY THE ENGINEER.

**EXISTING PIPE SEGMENT SUMMARY**

PIPE ID	6143
PIPE DIAMETER AND MATERIAL	8" VCP
UPSTREAM MH ID	1130730680
DOWNSTREAM MH ID	1130730690
TOTAL LENGTH (FT)	270
TOTAL NUMBER OF CONNECTED LATERALS	9
TOTAL NUMBER OF PIPE BURST LATERAL REPLACEMENTS	7
TOTAL NUMBER OF OPEN TRENCH LATERAL REPLACEMENTS	1


**LATERAL SUMMARY STARTING FROM DOWNSTREAM MH 1130730690**

FOOTAGE	ACTION	PROPERTY SERVED	PRIVATE SEWER LATERAL CONSTRUCTION NOTES
68'R	RECONNECT	1205 CALAPOOIA	PIPE BURST 6" CLAY LATERAL WITH 6" HDPE
71'L	RECONNECT	516 12TH	RECONNECT 4" PVC LATERAL
72'L	ABANDON	-	-
120'	ABANDON	-	-
125'L	RECONNECT	1210 WASHINGTON	PIPE BURST 6" CLAY LATERAL WITH 4" HDPE
128'R	RECONNECT	1213 CALAPOOIA	PIPE BURST 6" CLAY LATERAL WITH 6" HDPE
171'	ABANDON	-	-
174'L	RECONNECT	1226 WASHINGTON	PIPE BURST 4" CLAY LATERAL WITH 4" HDPE
210'R	RECONNECT	1221 CALAPOOIA	PIPE BURST 6" CLAY LATERAL WITH 6" HDPE
216'R	RECONNECT	1229 CALAPOOIA	PIPE BURST 4" CLAY LATERAL WITH 4" HDPE
222'	ABANDON	-	-
226'	ABANDON	-	-
228'L	RECONNECT	1230 WASHINGTON	RECONNECT 4" CI LATERAL.
272'	ABANDON	-	-
276'L	RECONNECT	1236 WASHINGTON	PIPE BURST 6" CLAY LATERAL WITH 6" HDPE
278'R	RECONNECT	1235 CALAPOOIA	RECONNECT 4" HDPE LATERAL.



DESIGNED: A. MONACO	REVISIONS	NO:	BY:
DRAWN: A. MONACO			
CHECKED: C. CERKLEWSKI			
DATE: 12/23/2024			

**PUBLIC WORKS DEPARTMENT  
ENGINEERING SERVICES**



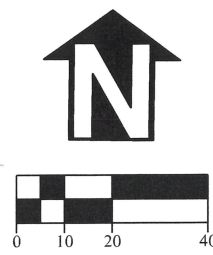
**SS-24-01, 2024 PIPE BURSTING  
PIPE ID 6143**

REGISTERED PROFESSIONAL  
ENGINEER  
56,471PE  
*Christopher L. Cerkowski*  
OREGON  
JULY 9, 2002  
CHRISTOPHER L. CERKLEWSKI

EXPIRATION DATE: 12/31/2025

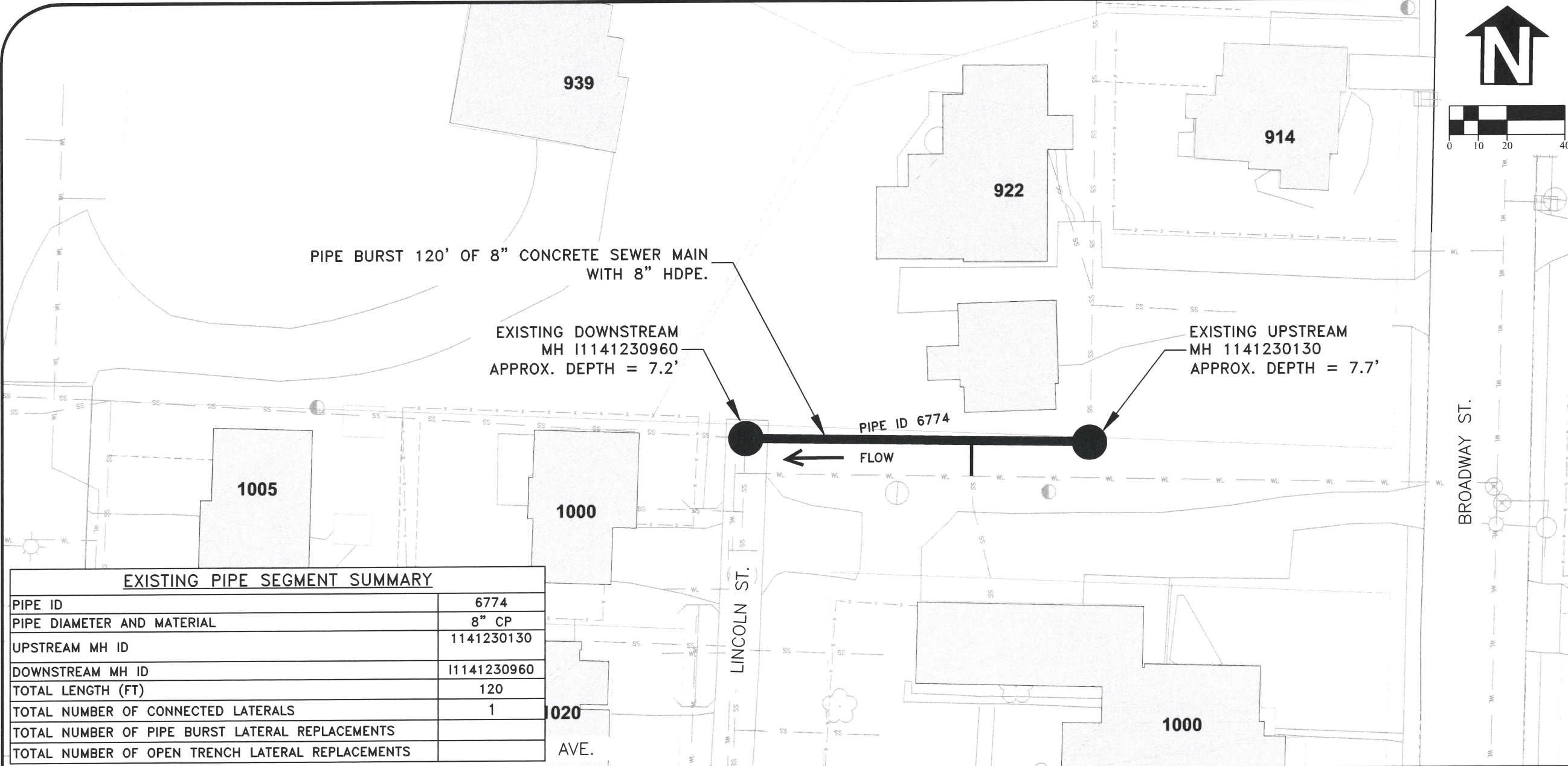
SHEET NO. 8 OF 12  
PROJECT NO: SS-24-01  
FILE: BASE.DWG





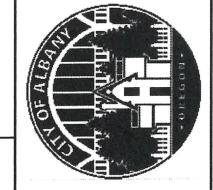
DESIGNED: A. MONACO  
 DRAWN: A. MONACO  
 CHECKED: C. CERKLEWSKI  
 DATE: 12/23/2024

REVISIONS	
NO.	BY:

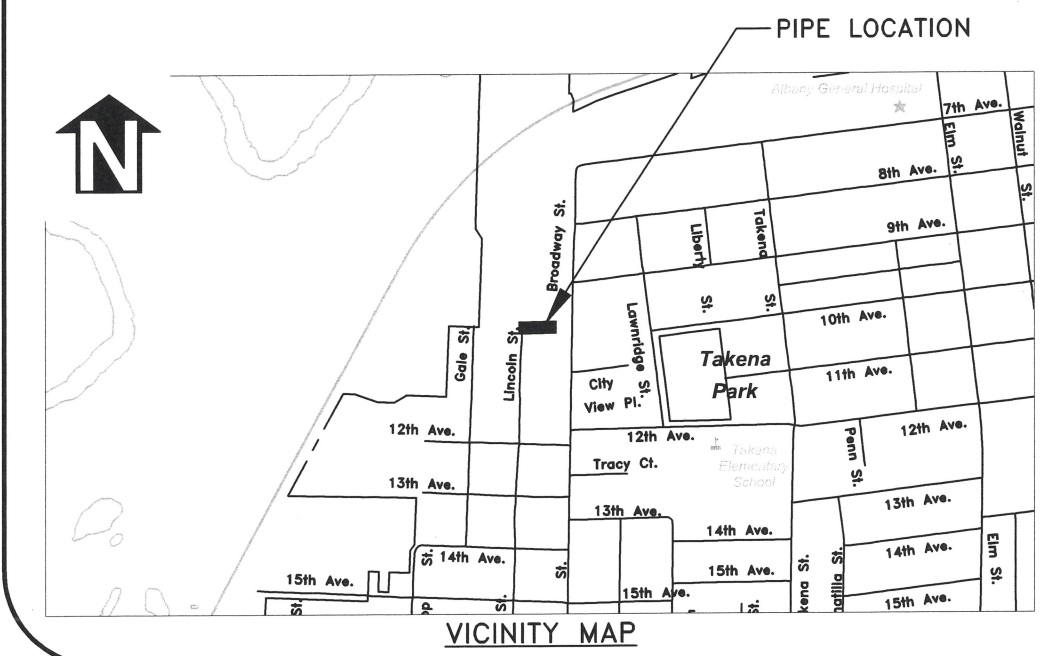


EXISTING PIPE SEGMENT SUMMARY	
PIPE ID	6774
PIPE DIAMETER AND MATERIAL	8" CP
UPSTREAM MH ID	1141230130
DOWNSTREAM MH ID	11141230960
TOTAL LENGTH (FT)	120
TOTAL NUMBER OF CONNECTED LATERALS	1
TOTAL NUMBER OF PIPE BURST LATERAL REPLACEMENTS	
TOTAL NUMBER OF OPEN TRENCH LATERAL REPLACEMENTS	

**PUBLIC WORKS DEPARTMENT**  
**ENGINEERING SERVICES**



**SS-24-01, 2024 PIPE BURSTING**  
**PIPE ID 6774**



LATERAL SUMMARY STARTING FROM UPSTREAM MH 1141230130			
FOOTAGE	ACTION	PROPERTY SERVED	PRIVATE SEWER LATERAL CONSTRUCTION NOTES
39'L	RECONNECT	1000 BROADWAY STREET	RECONNECT 4" PVC LATERAL



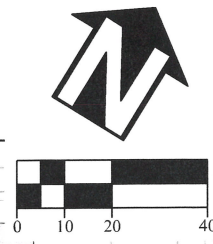
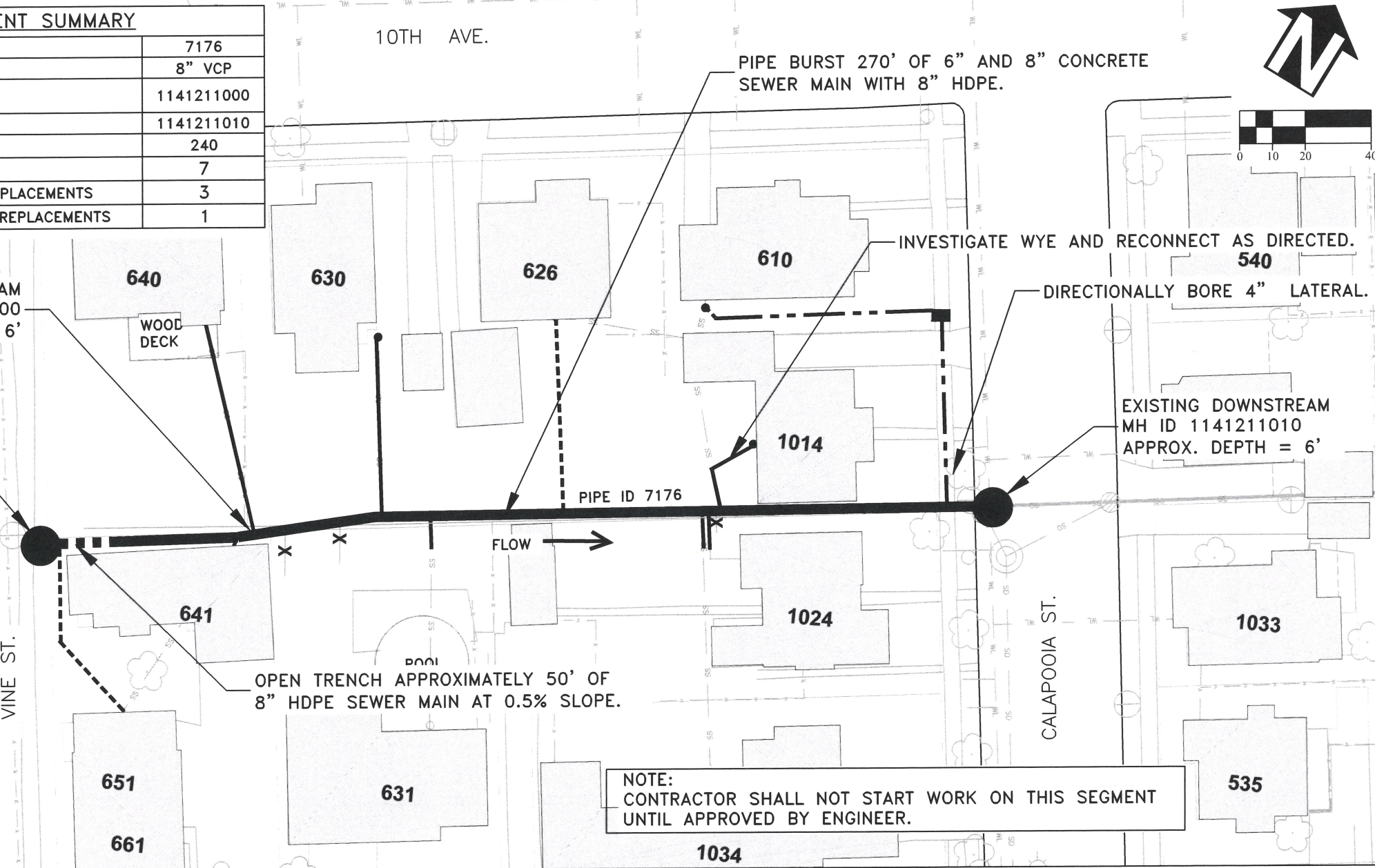
EXPIRATION DATE: 12/31/2025  
 SHEET NO. 9 OF 12  
 PROJECT NO: SS-24-01  
 FILE: BASE.DWG

EXISTING PIPE SEGMENT SUMMARY	
PIPE ID	7176
PIPE DIAMETER AND MATERIAL	8" VCP
UPSTREAM CO	1141211000
DOWNSTREAM MH ID	1141211010
TOTAL LENGTH (FT)	240
TOTAL NUMBER OF CONNECTED LATERALS	7
TOTAL NUMBER OF PIPE BURST LATERAL REPLACEMENTS	3
TOTAL NUMBER OF OPEN TRENCH LATERAL REPLACEMENTS	1

EXISTING UPSTREAM CO 1141211000 APPROX. DEPTH = 6'

CONSTRUCT STANDARD PRECAST MANHOLE IN VINE STREET. SEE STANDARD DRAWING NO. 401. VERIFY WORK WITH ENGINEER PRIOR TO ORDERING MATERIALS AND INSTALLATION.

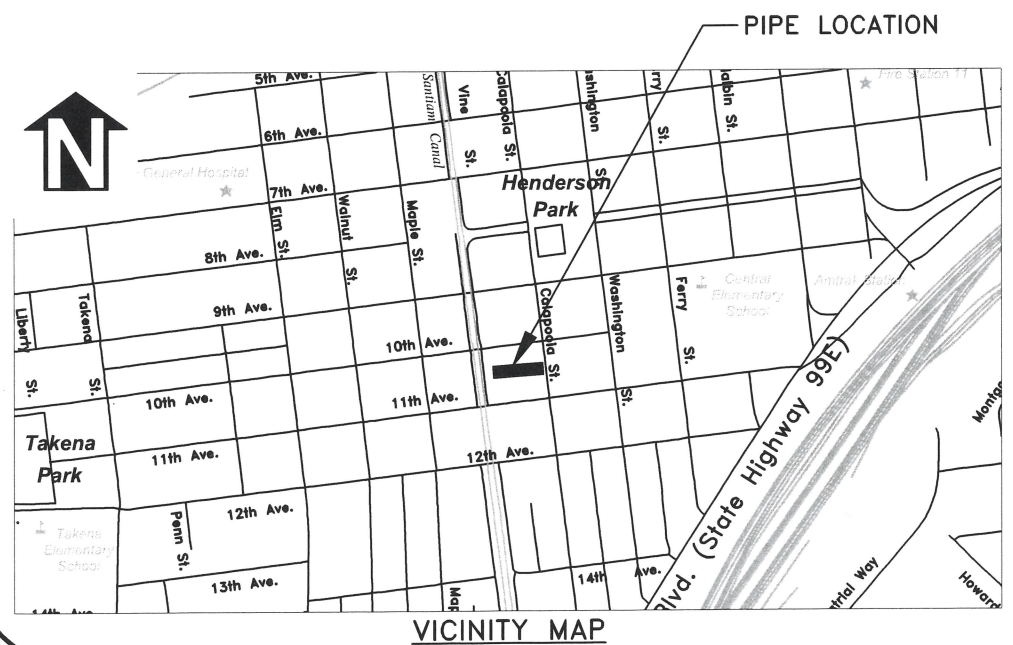
MATERIAL CHANGE SUMMARY STARTING FROM DOWNSTREAM MH 1141211010	
FOOTAGE	DESCRIPTION
6-13	Clay to PVC
164-169	VCP to CP



DESIGNED: A. MONACO	REVISIONS
DRAWN: A. MONACO	NO: ---
CHECKED: C. CERKLEWSKI	BY: ---
DATE: 12/23/2024	DATE: ---

PUBLIC WORKS DEPARTMENT  
ENGINEERING SERVICES

SS-24-01, 2024 PIPE BURSTING  
PIPE ID 7176



LATERAL SUMMARY STARTING FROM DOWNSTREAM MH 1141211010			
FOOTAGE	ACTION	PROPERTY SERVED	PRIVATE SEWER LATERAL CONSTRUCTION NOTES
86' R	CONNECT	610 10TH AVE	DIRECTIONAL BORE 4" HDPE LATERAL
86' R	RECONNECT	1014 CALAPOOIA ST	PIPE BURST 6" CLAY LATERAL WITH 6" HDPE
88' L	ABANDON		-
90' L	RECONNECT	1024 CALAPOOIA ST	RECONNECT 4" PVC
92' L	RECONNECT	1034 CALAPOOIA ST	RECONNECT 4" PVC
132' R	CONNECT	626 10TH AVE	OPEN TRENCH REROUTE 6" LATERAL
170' L	RECONNECT	631 11TH AVE	RECONNECT 4" PVC
184' R	RECONNECT	630 10TH AVE	PIPE BURST 6" CLAY LATERAL WITH 6" HDPE
198' L	ABANDON		-
212' L	ABANDON		-
222' R	RECONNECT	640 10TH AVE	PIPE BURST 6" CLAY LATERAL WITH 6" HDPE
228' L	RECONNECT	641 11TH AVE	RECONNECT 6" CLAY LATERAL
280' L	CONNECT	651 11TH AVE	OPEN TRENCH REROUTE 4" LATERAL



EXPIRATION DATE: 12/31/2025

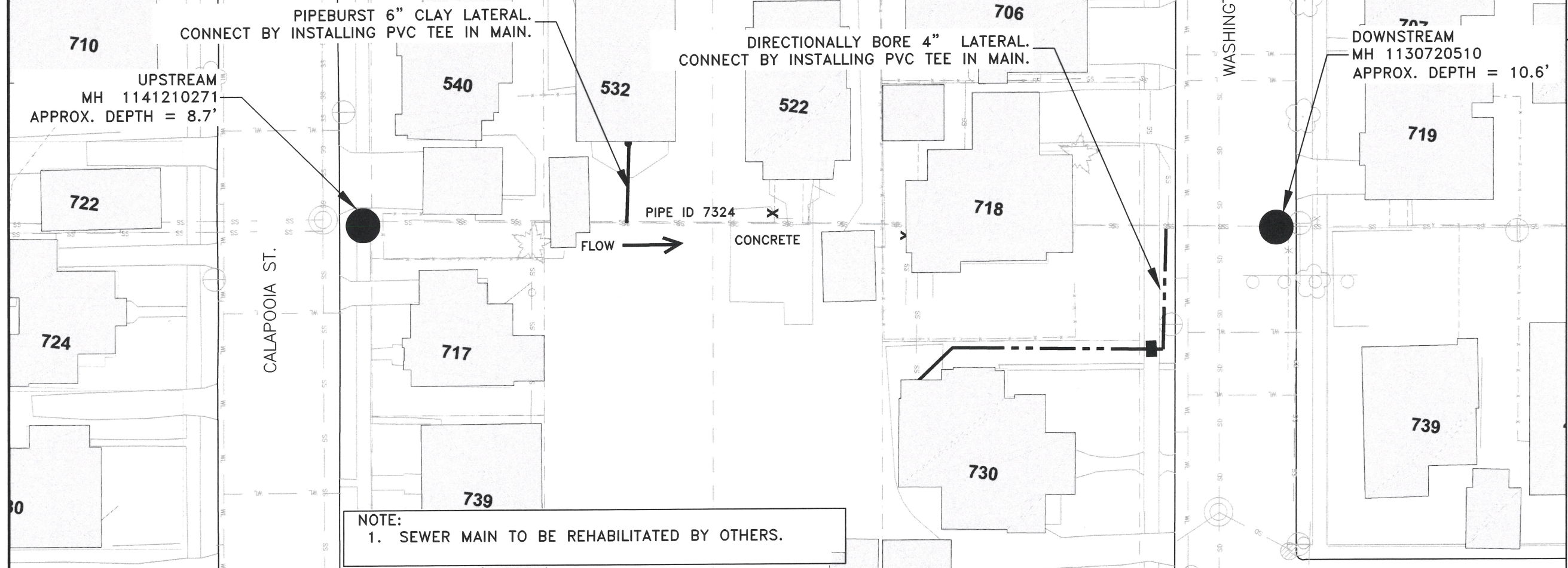
SHEET NO. 10 OF 12

PROJECT NO: SS-24-01

FILE: BASE.DWG

**MATERIAL CHANGE SUMMARY STARTING FROM  
DOWNSTREAM MH1130720510**

FOOTAGE	DESCRIPTION
283	CLAY to PVC

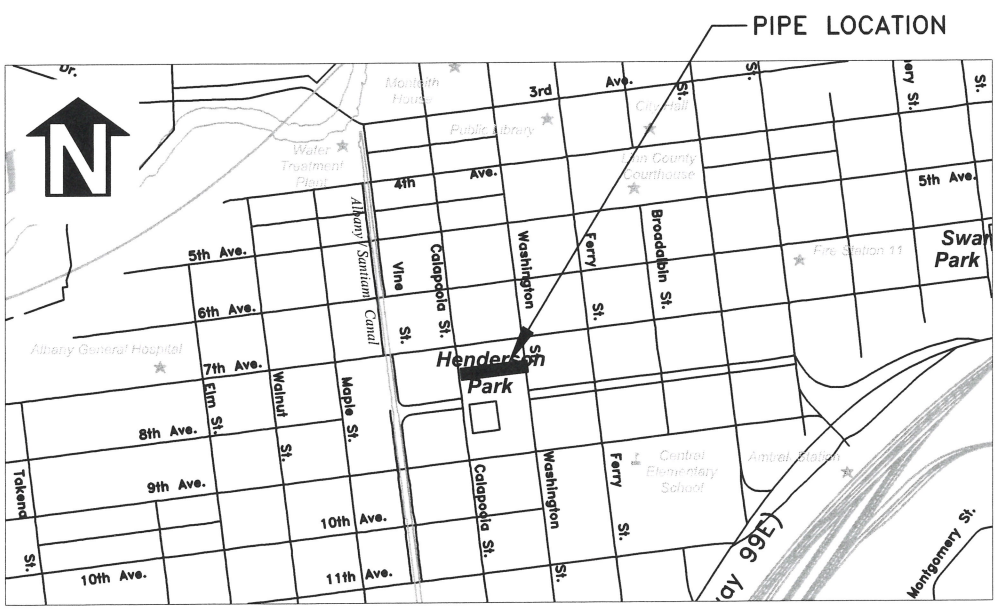


**NOTE:**  
1. SEWER MAIN TO BE REHABILITATED BY OTHERS.

DESIGNED: A. MONACO	REVISIONS
DRAWN: A. MONACO	NO: -- BY: --
CHECKED: C. CERKLEWSKI	DATE: --
DATE: 12/23/2024	

**PUBLIC WORKS DEPARTMENT  
ENGINEERING SERVICES**

**SS-24-01, 2024 PIPE BURSTING  
PIPE ID 7324**



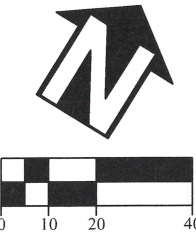
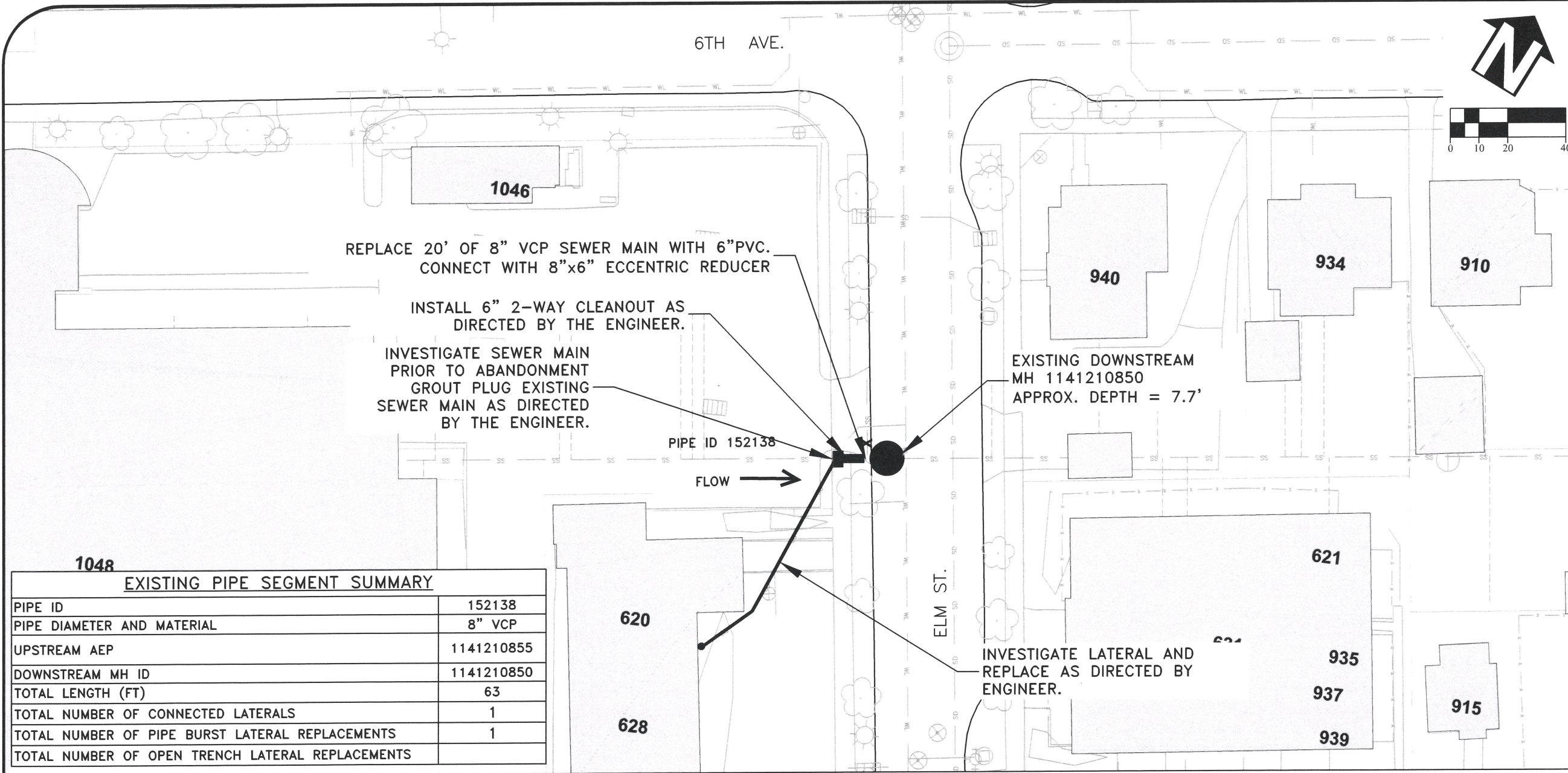
**VICINITY MAP**

LATERAL SUMMARY STARTING FROM DOWNSTREAM MH 1130720510			
FOOTAGE	ACTION	PROPERTY SERVED	PRIVATE SEWER LATERAL CONSTRUCTION NOTES
40'R	CONNECT	730 WASHINGTON	DIRECTION BORE 4" LATERAL
229'R	RECONNECT	532 7TH AVE	PIPE BURST 6" CLAY LATERAL

EXISTING PIPE SEGMENT SUMMARY	
PIPE ID	7324
PIPE DIAMETER AND MATERIAL	8" VCP
UPSTREAM MH ID	1141210271
DOWNSTREAM MH ID	1130720510
TOTAL LENGTH (FT)	318
TOTAL NUMBER OF CONNECTED LATERALS	
TOTAL NUMBER OF PIPE BURST LATERAL REPLACEMENTS	1
TOTAL NUMBER OF DIRECTIONAL BORE LATERAL REPLACEMENTS	1



EXPIRATION DATE: 12/31/2025  
SHEET NO. 11 OF 12  
PROJECT NO: SS-24-01  
FILE: BASE.DWG



DESIGNED: A. MONACO	REVISIONS
DRAWN: A. MONACO	NO: --
CHECKED: C. CERKLEWSKI	BY: --
DATE: 12/23/2024	DATE: --

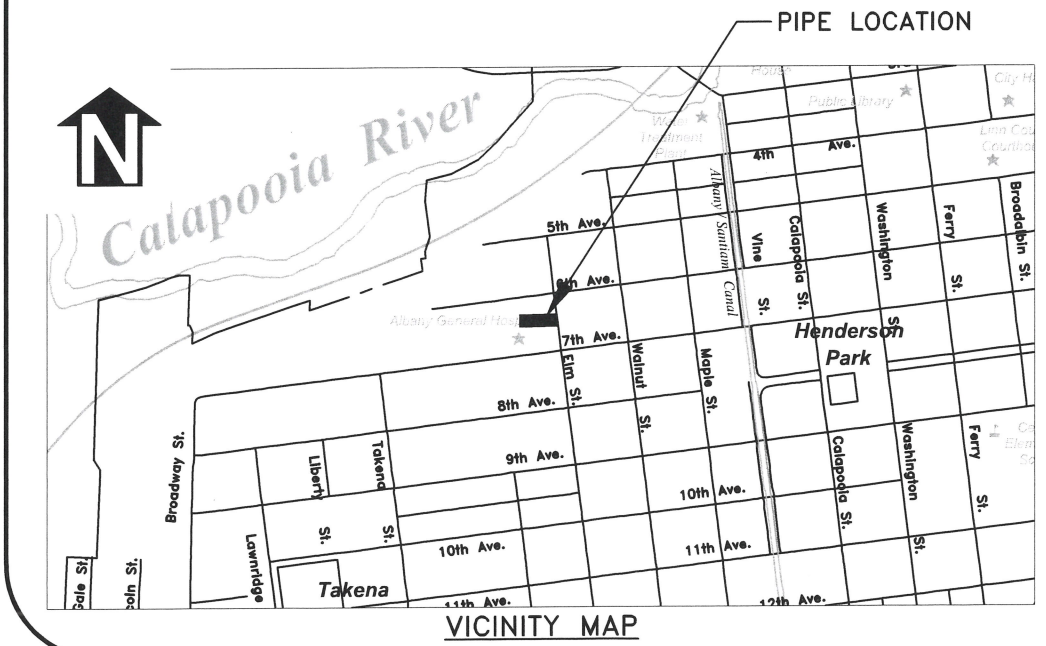
**1048**

EXISTING PIPE SEGMENT SUMMARY	
PIPE ID	152138
PIPE DIAMETER AND MATERIAL	8" VCP
UPSTREAM AEP	1141210855
DOWNSTREAM MH ID	1141210850
TOTAL LENGTH (FT)	63
TOTAL NUMBER OF CONNECTED LATERALS	1
TOTAL NUMBER OF PIPE BURST LATERAL REPLACEMENTS	1
TOTAL NUMBER OF OPEN TRENCH LATERAL REPLACEMENTS	

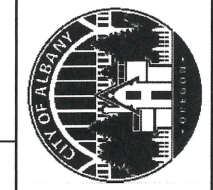
LATERAL SUMMARY STARTING FROM DOWNSTREAM MH 1141210850			
FOOTAGE	ACTION	PROPERTY SERVED	PRIVATE SEWER LATERAL CONSTRUCTION NOTES
5'R	ABANDON		
20'L	RECONNECT	620 ELM	INVESTIGATE AND REPLACE LATERAL AS DIRECTED

MATERIAL CHANGE SUMMARY STARTING FROM DOWNSTREAM MH 1130630070	
FOOTAGE	DESCRIPTION
0-9	PVC
9-38	VCP
38-45	PVC

NOTES:  
1. EXISTING ASPHALT IN ELM STREET IS 16" THICK



**PUBLIC WORKS DEPARTMENT**  
**ENGINEERING SERVICES**



**SS-24-01, 2024 PIPE BURSTING**  
**PIPE ID 152138**



EXPIRATION DATE: 12/31/2025  
 SHEET NO. 12 OF 12  
 PROJECT NO: SS-24-01  
 FILE: BASE.DWG